



Profiles:

Profiles are manufactured from 6063-T5 extruded aluminum with a wall thickness of up to 1/8" allowing for oversized panels. The door systems are available with either powder coat, Kynar or anodized finishes in virtually any color the customer chooses.

Tracking:

There are four types of recessed tracks available to accommodate any flooring conditions, allowing for an almost seamless look with only 3/16" protrusion above the finished floor. There are also one type of surface track available to accommodate any flooring conditions, allowing for an almost seamless look with only 3/16" protrusion above top of the track. All weight is carried on the bottom track, the top track serves as a guide.

Hardware:

The wheel carriages are comprised of stainless steel wheels and have a corrosion resistant treatment applied for high performance in coastal regions. Each wheel carriage can support up to 550 lbs . The operating mechanism includes a multi-point lock with a flush handle. The entire door system has specially designed EPDM gaskets to create a totally closed, weather tight system.

Weight:

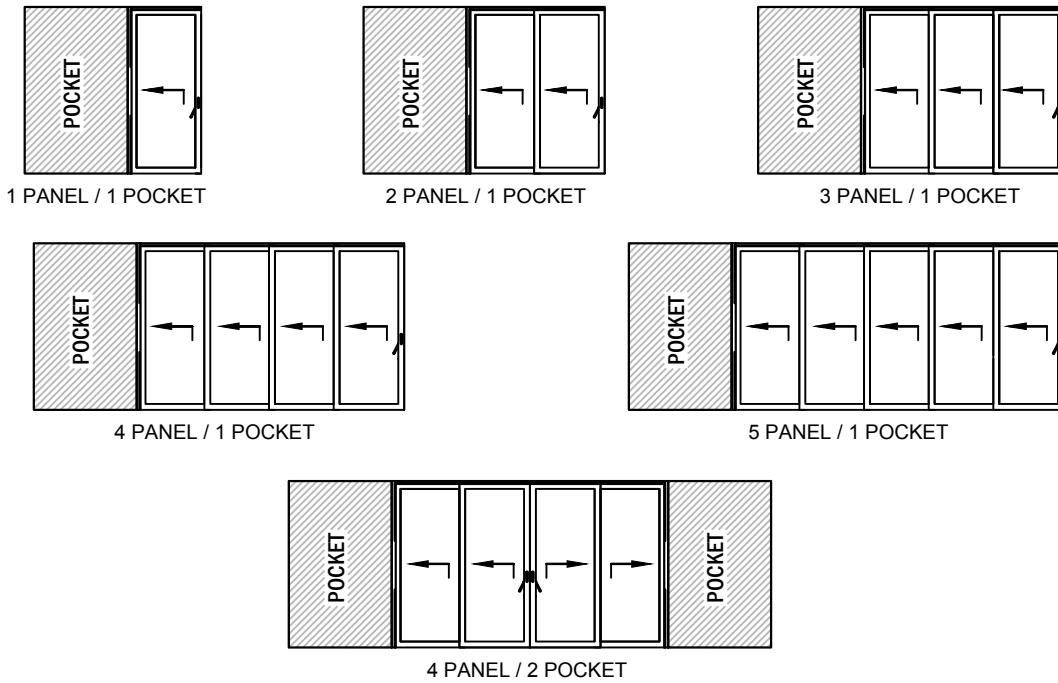
Each panel weighs approximately 7 to 8 lbs per sq ft depending on overall panel size and glass configuration.

Glass Thickness:

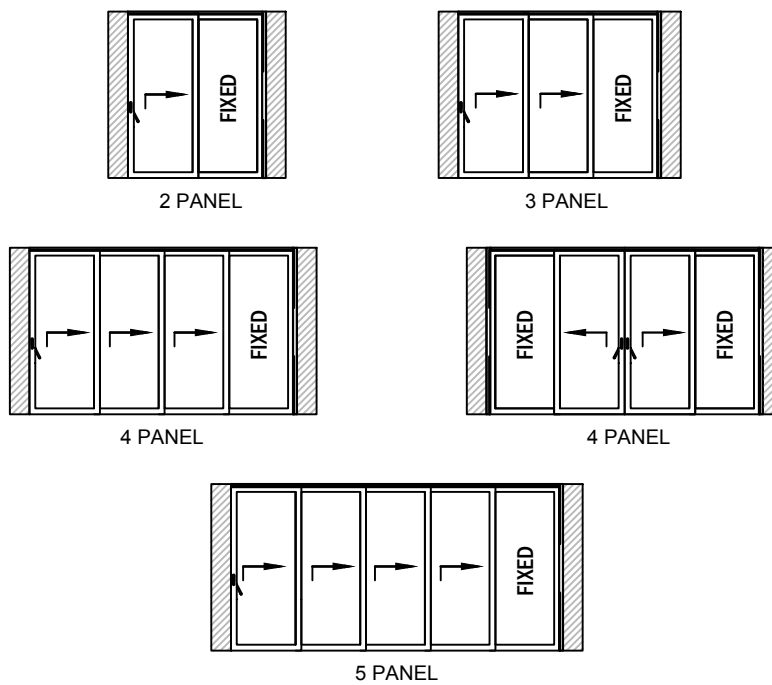
1 1/4"

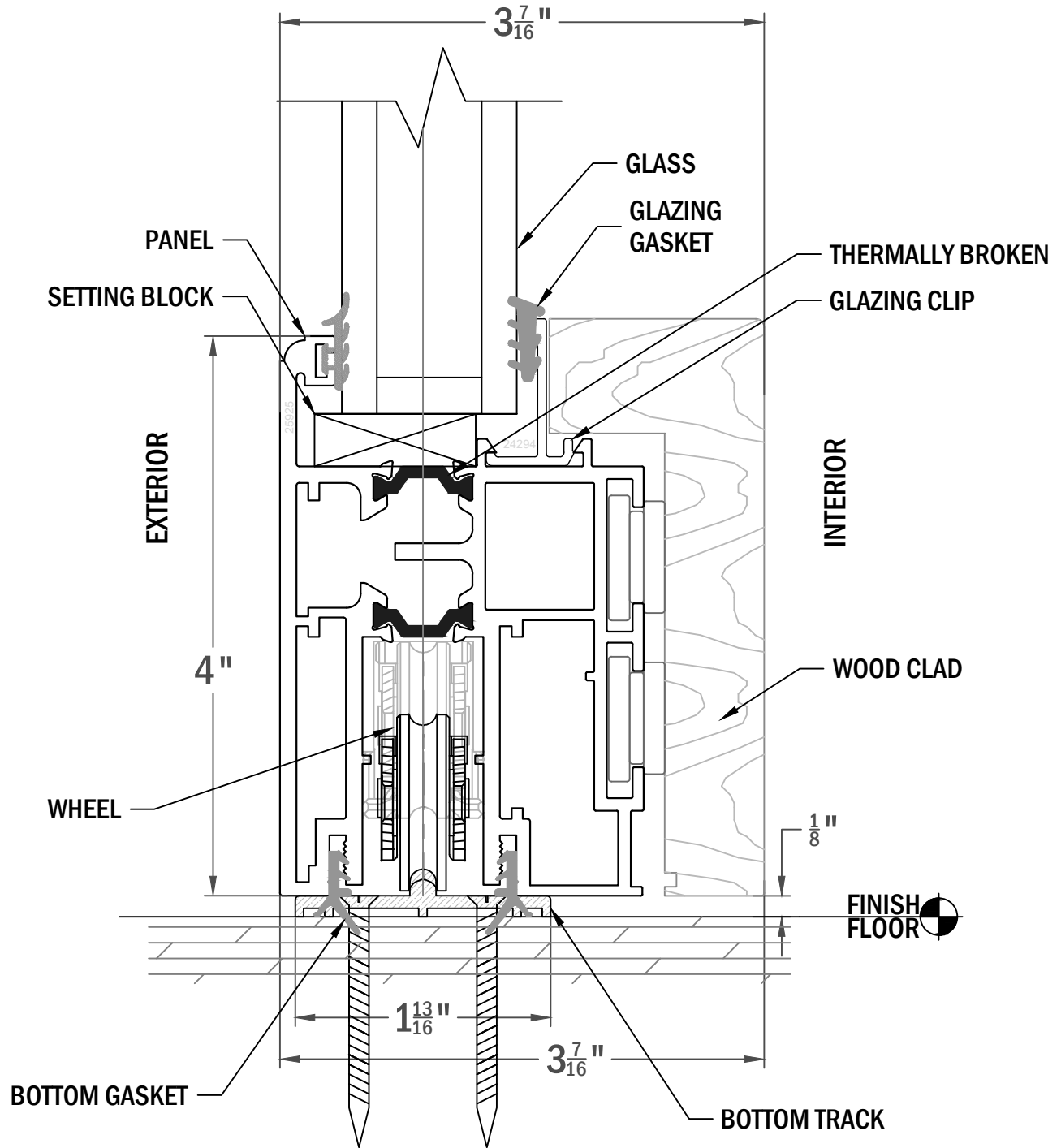


PANEL CONFIGURATION WITH POCKETS



PANEL CONFIGURATION WITH FIXED PANEL

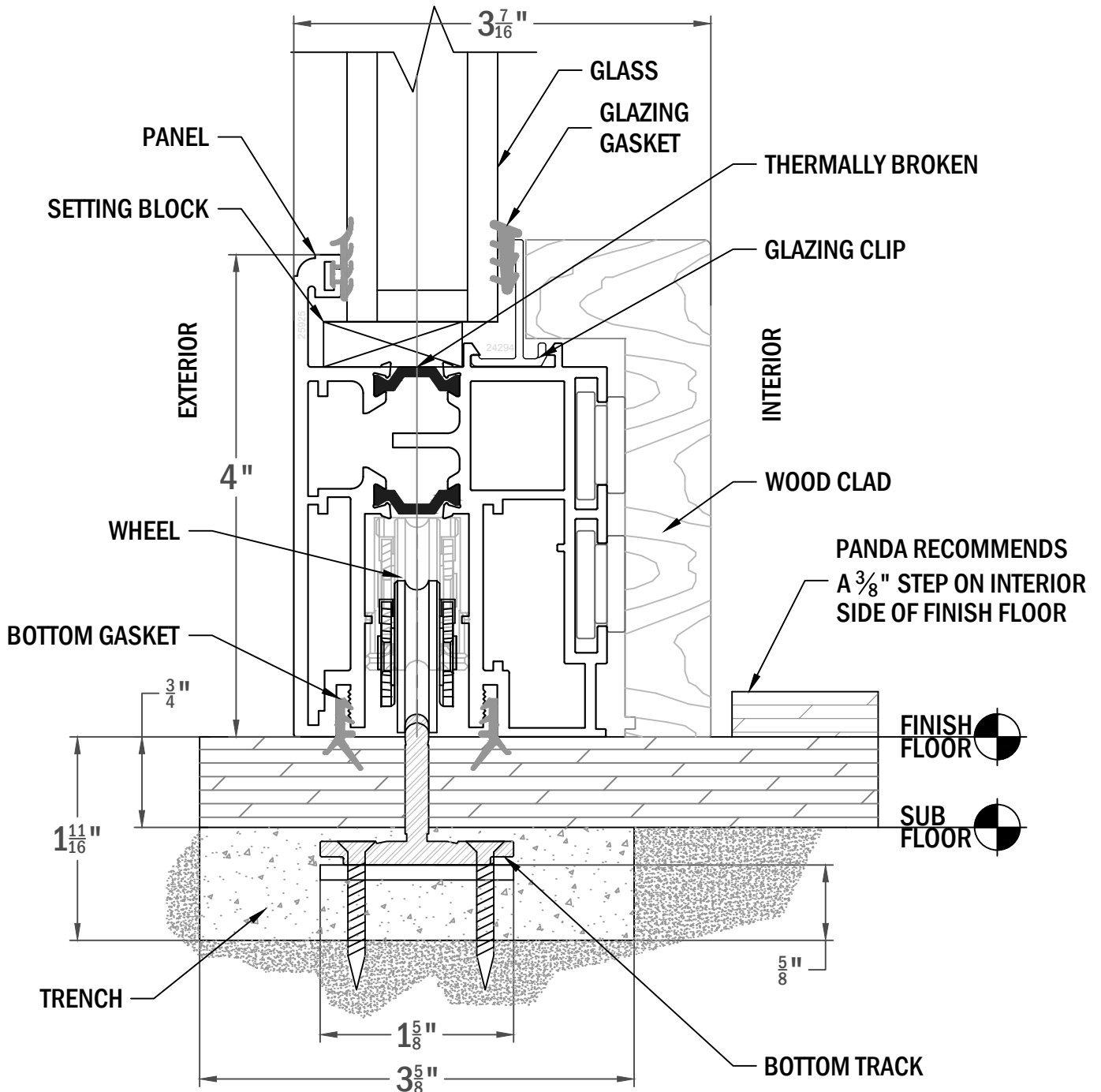






RECOMMENDED TRENCH WIDTH:

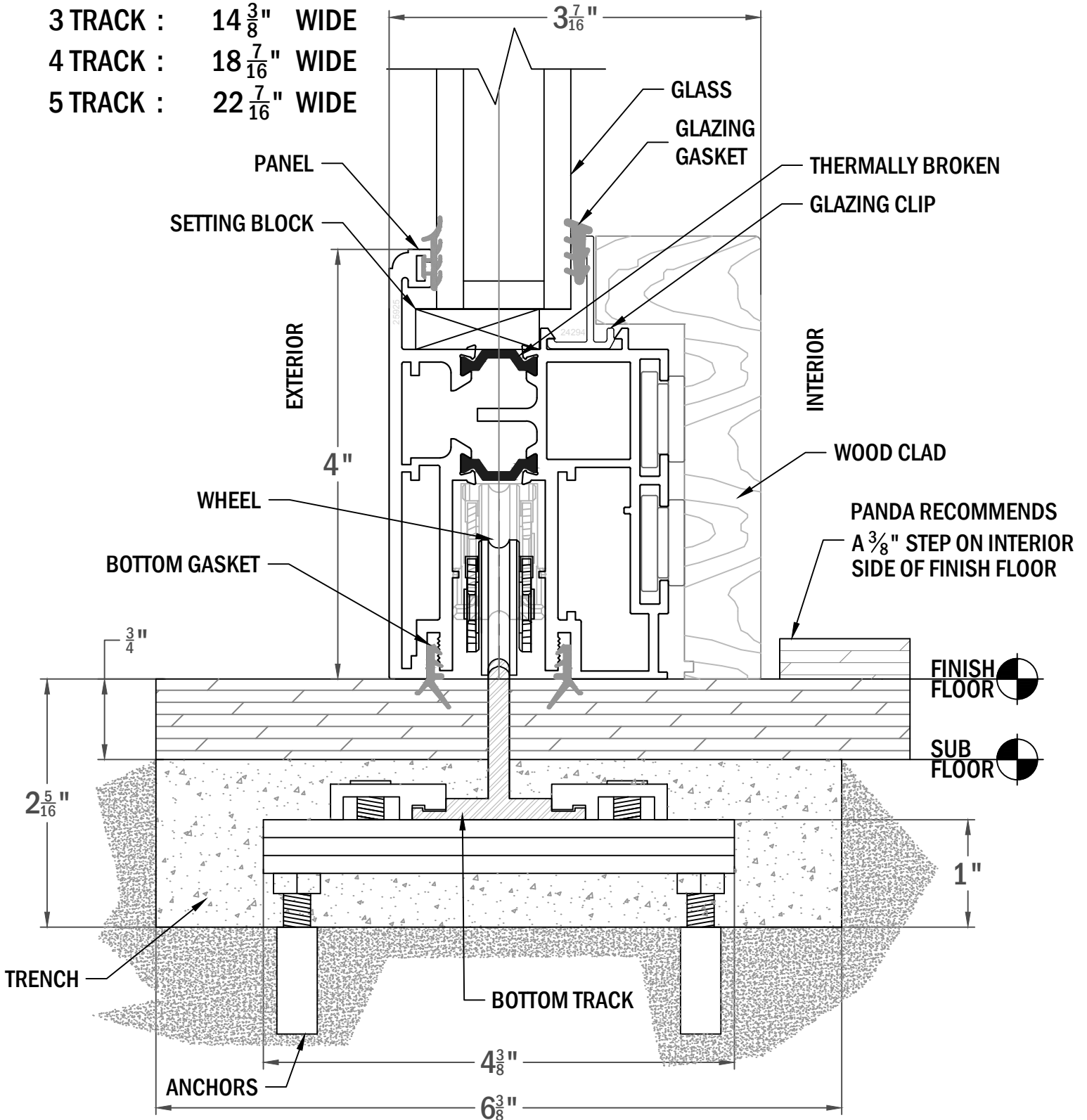
- 1 TRACK : 3 5/8" WIDE
- 2 TRACK : 7 5/8" WIDE
- 3 TRACK : 11 5/8" WIDE
- 4 TRACK : 15 5/8" WIDE
- 5 TRACK : 19 5/8" WIDE





RECOMMENDED TRENCH WIDTH:

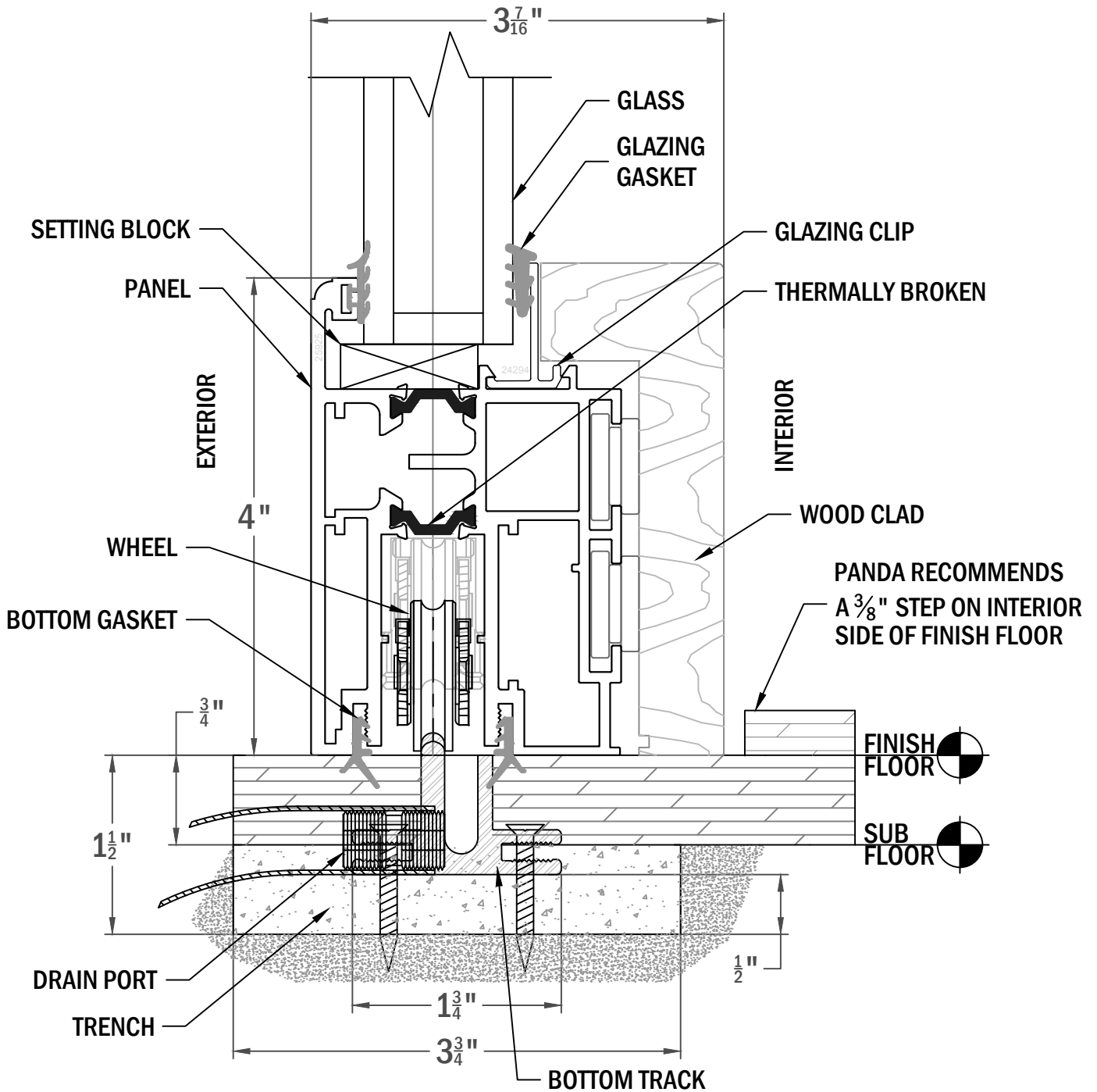
- 1 TRACK : 6 ³/₈" WIDE
- 2 TRACK : 10 ³/₈" WIDE
- 3 TRACK : 14 ³/₈" WIDE
- 4 TRACK : 18 ⁷/₁₆" WIDE
- 5 TRACK : 22 ⁷/₁₆" WIDE





RECOMMENDED TRENCH WIDTH:

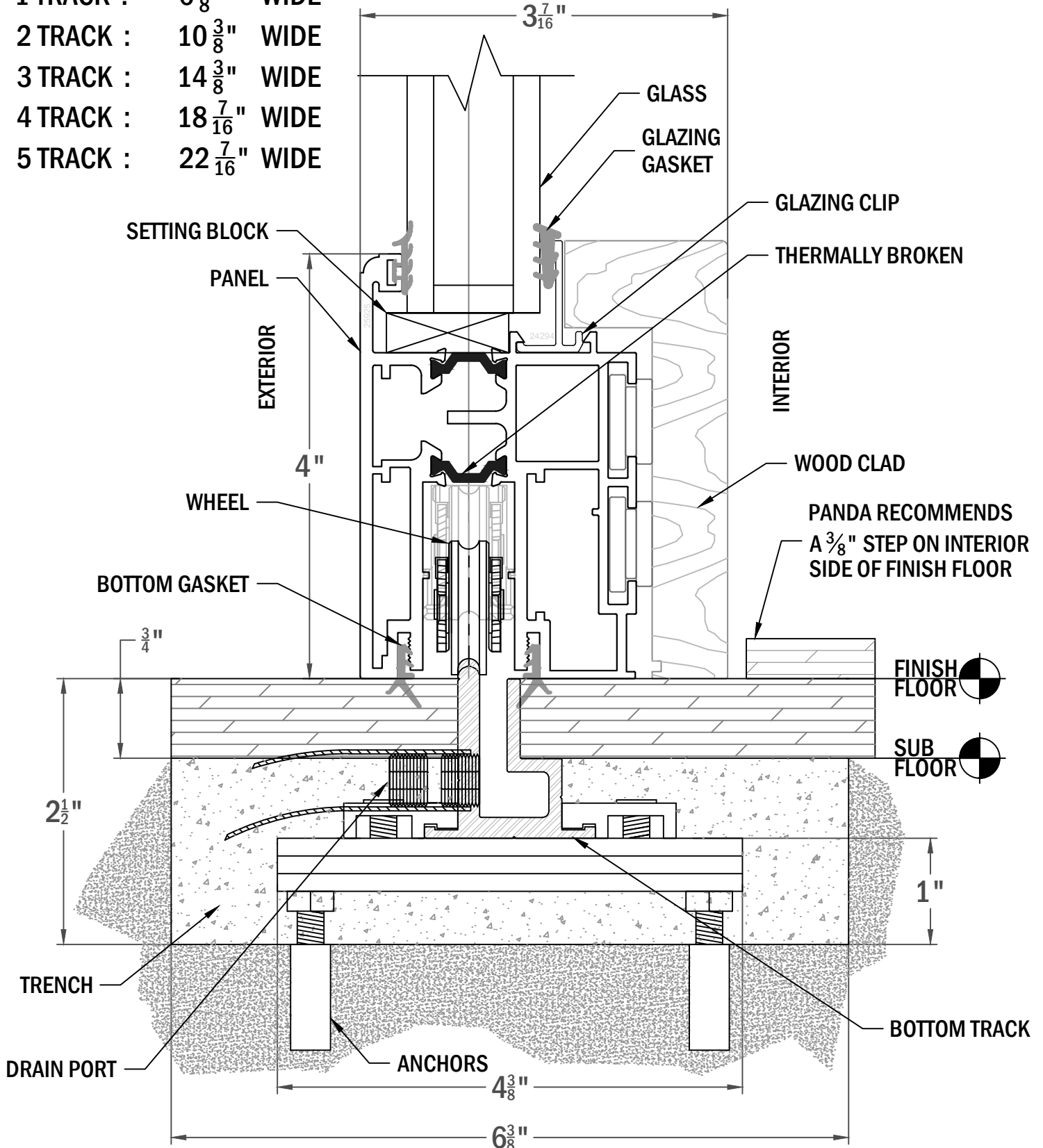
- 1 TRACK : 3 3/4" WIDE
- 2 TRACK : 7 3/4" WIDE
- 3 TRACK : 11 3/4" WIDE
- 4 TRACK : 15 3/4" WIDE
- 5 TRACK : 19 13/16" WIDE





RECOMMENDED TRENCH WIDTH:

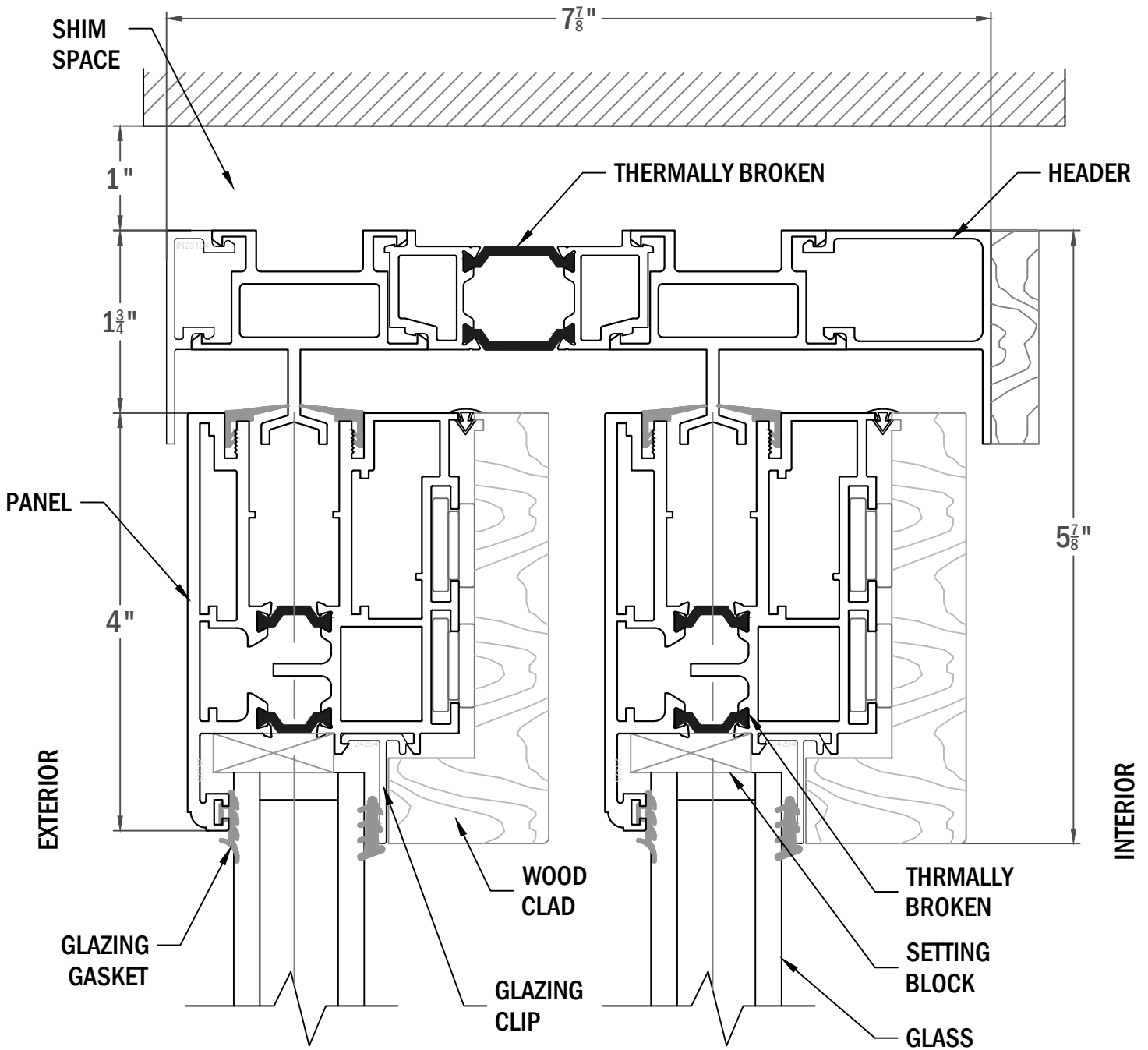
- 1 TRACK : 6 ³/₈" WIDE
- 2 TRACK : 10 ³/₈" WIDE
- 3 TRACK : 14 ³/₈" WIDE
- 4 TRACK : 18 ⁷/₁₆" WIDE
- 5 TRACK : 22 ⁷/₁₆" WIDE





HEADER WIDTH:

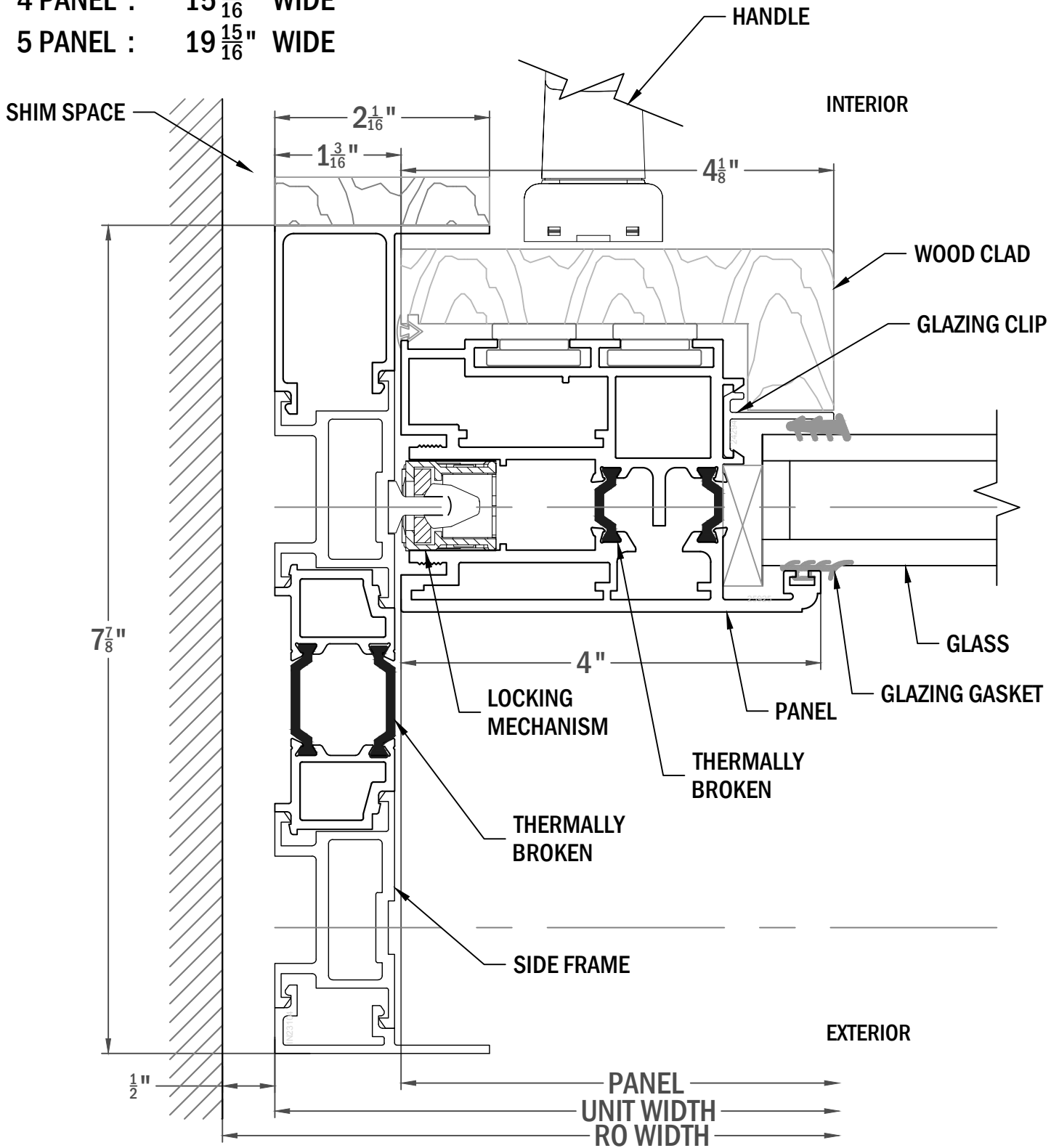
- 1 PANEL : 3 ⁷/₈" WIDE
- 2 PANEL : 7 ⁷/₈" WIDE
- 3 PANEL : 11 ¹⁵/₁₆" WIDE
- 4 PANEL : 15 ¹⁵/₁₆" WIDE
- 5 PANEL : 19 ¹⁵/₁₆" WIDE

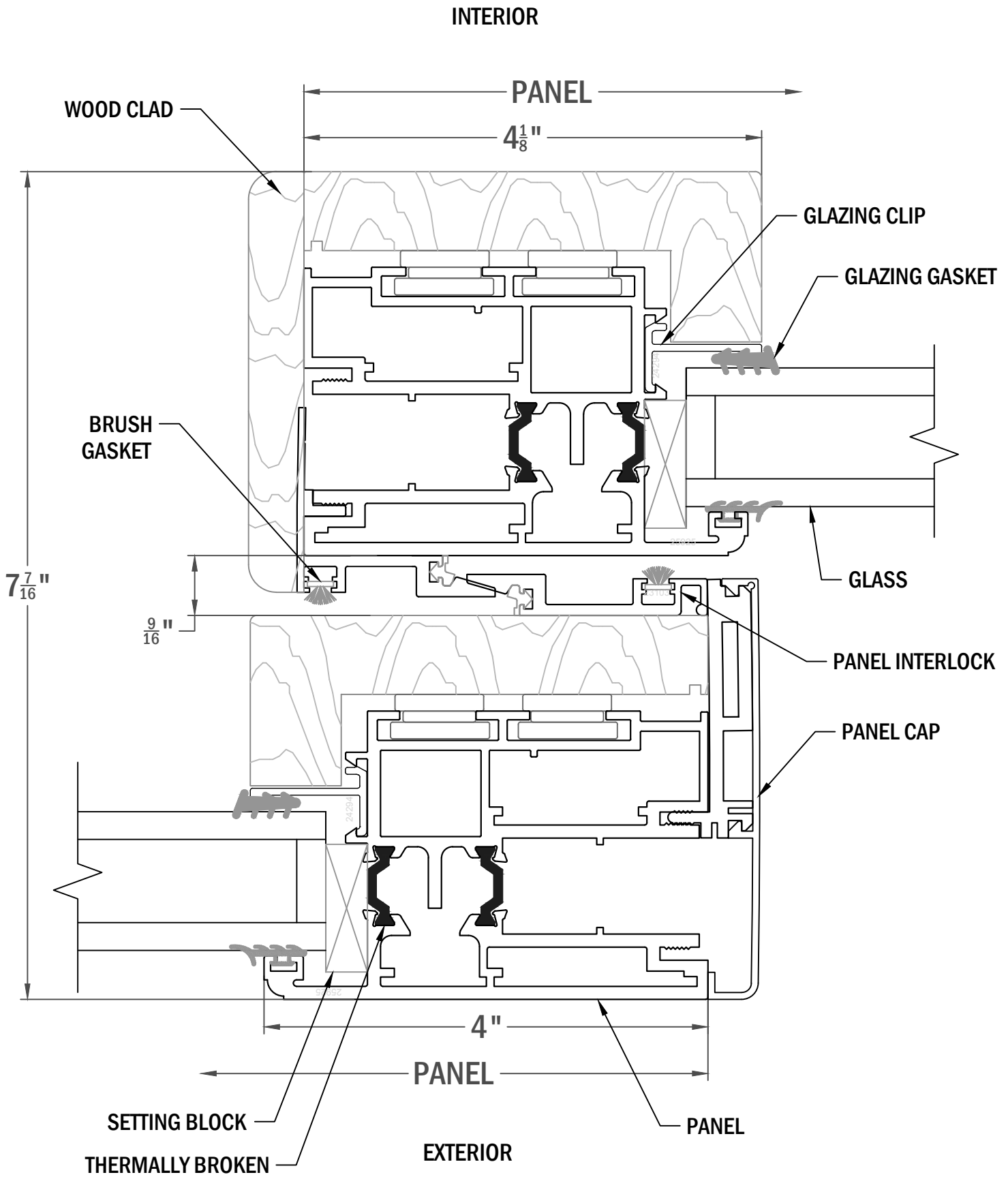


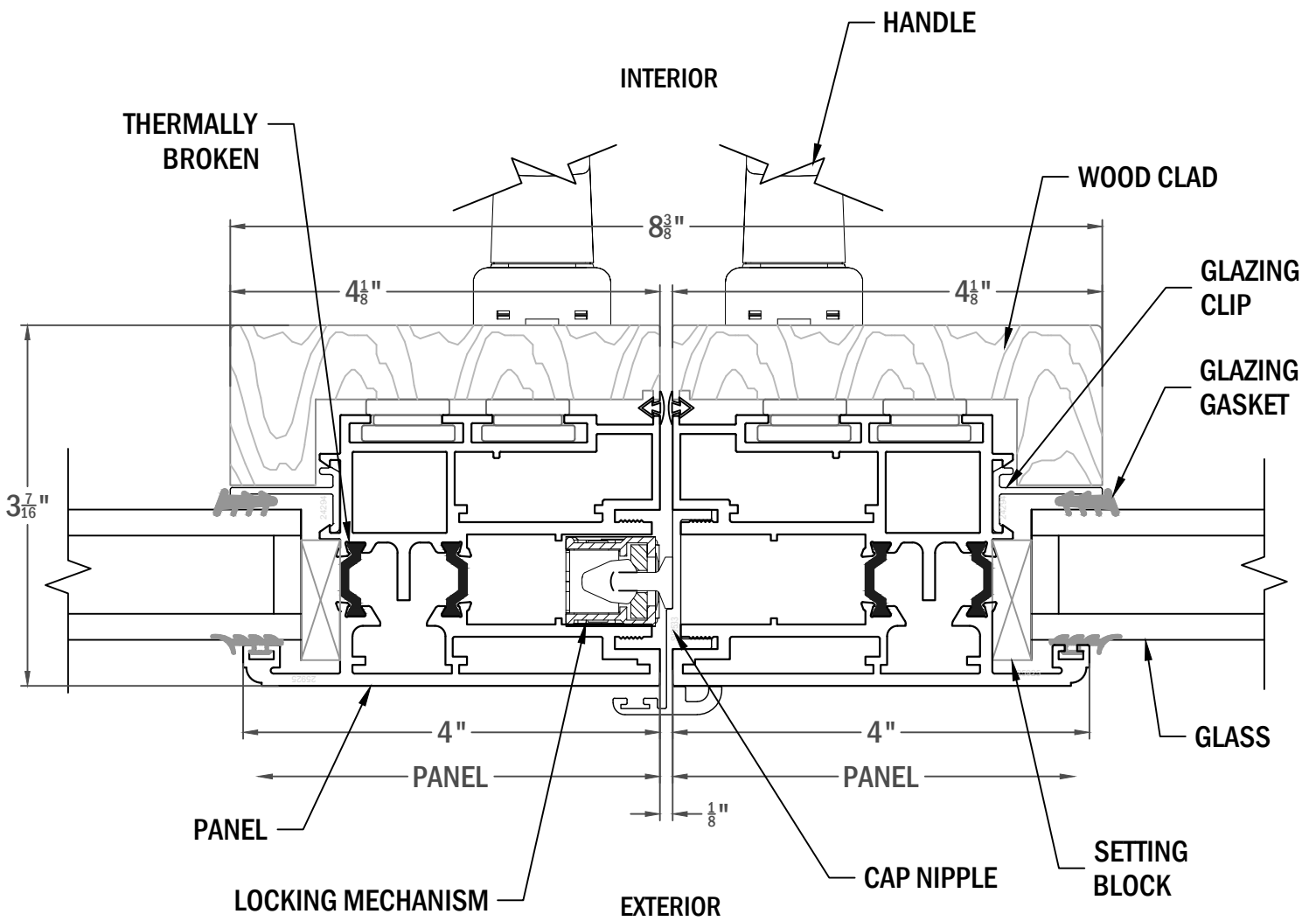


SIDE FRAME WIDTH:

- 1 PANEL : 3 ⁷/₈" WIDE
- 2 PANEL : 7 ⁷/₈" WIDE
- 3 PANEL : 11 ¹⁵/₁₆" WIDE
- 4 PANEL : 15 ¹⁵/₁₆" WIDE
- 5 PANEL : 19 ¹⁵/₁₆" WIDE









RECOMMENDED POCKET WIDTH:

- 1 PANEL : 4 ⁵/₈" WIDE
- 2 PANEL : 8 ⁵/₈" WIDE
- 3 PANEL : 12 ⁵/₈" WIDE
- 4 PANEL : 16 ⁵/₈" WIDE
- 5 PANEL : 20 ⁵/₈" WIDE

