



The Panda SERIES 66 HSW System is custom made to order and consists of engineered wood core frames that run along a single track for minimum obstruction.

System:

The top track, bottom track and side profiles form a closed frame. Together with the doors, having aluminum rebates and gaskets, all act in compression.

Profiles:

Profiles are made up of engineered wood cores with a 1/4" wood veneer. This design prevents twisting and warping found in other designs. The veneer may be virtually any wood available on the market.

Accessories:

Carriages with 4 covered wheels and protected ball bearings, double sliding rollers, exclusively designed handles with ergonomic grip, stainless steel screws and pins.

Running:

The HSW-S66 is solely supported and suspended from the header by means of 2 wheel-sets per panel .

HSW:

The horizontal sliding door system quickly, easily and silently stacks in its custom parking area. HSW units are made per opening and parking areas are made accordingly.

Dimension:

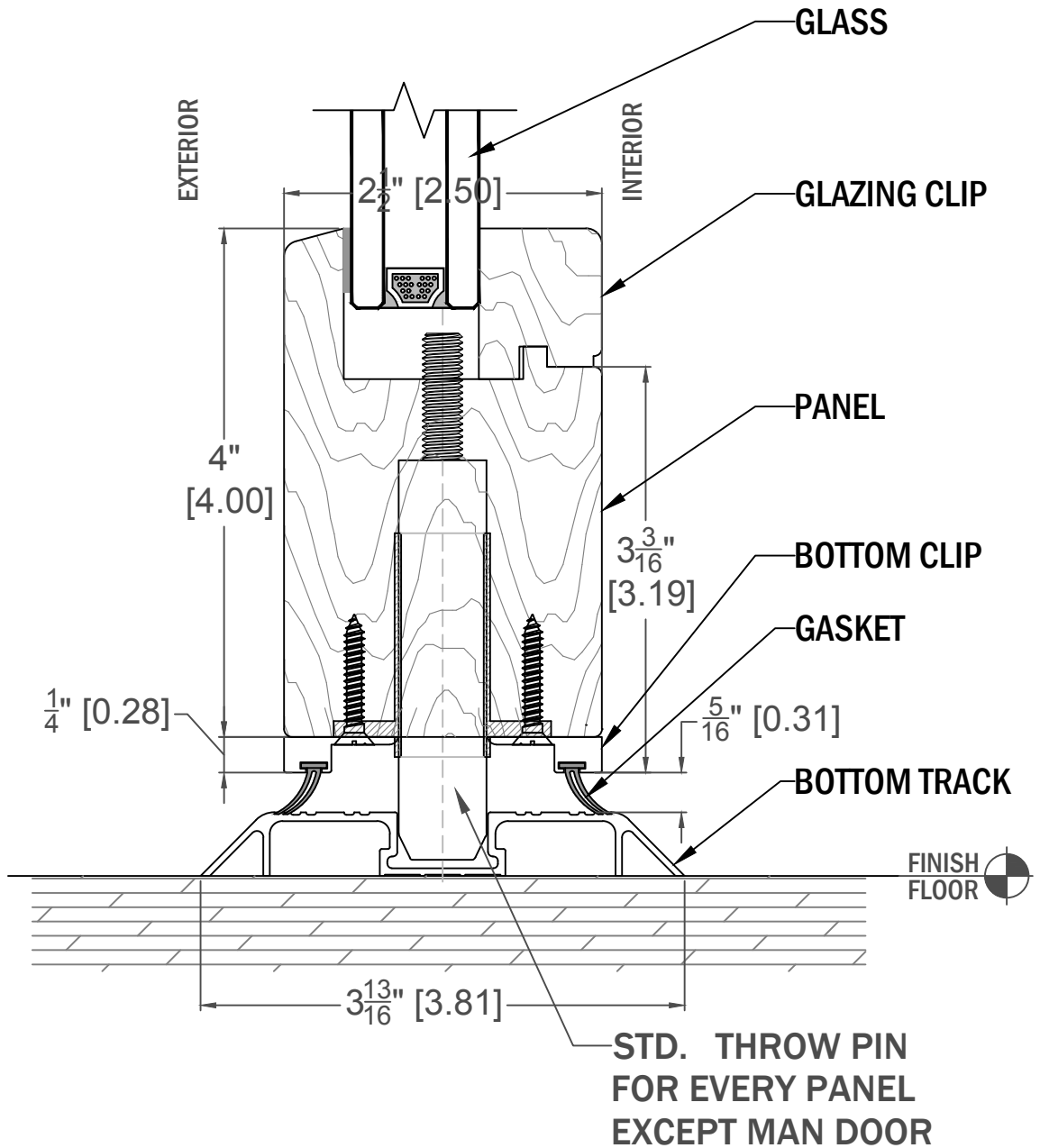
The individual panels in a system are always equal in size and can be a maximum of 42" wide and 144" high. HSW systems can be as long as you like which slide along the tracks and are connected with special joints and seals.

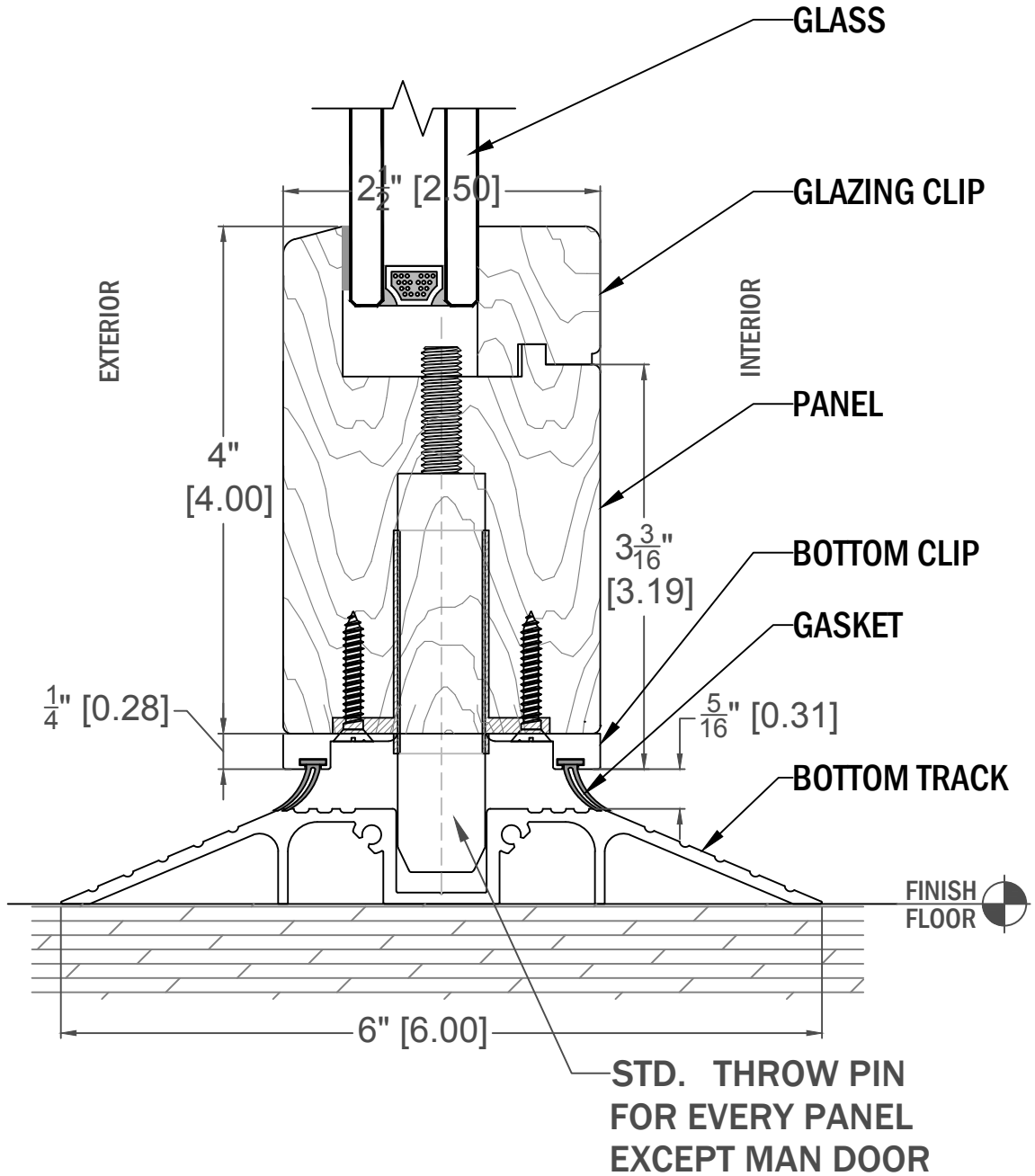
Glazing:

Various types of glass with a typical thickness of 1", may be used. The glass is shimmed by means of accessories located in the corners of the doors and is externally adjustable at any time.

Weight:

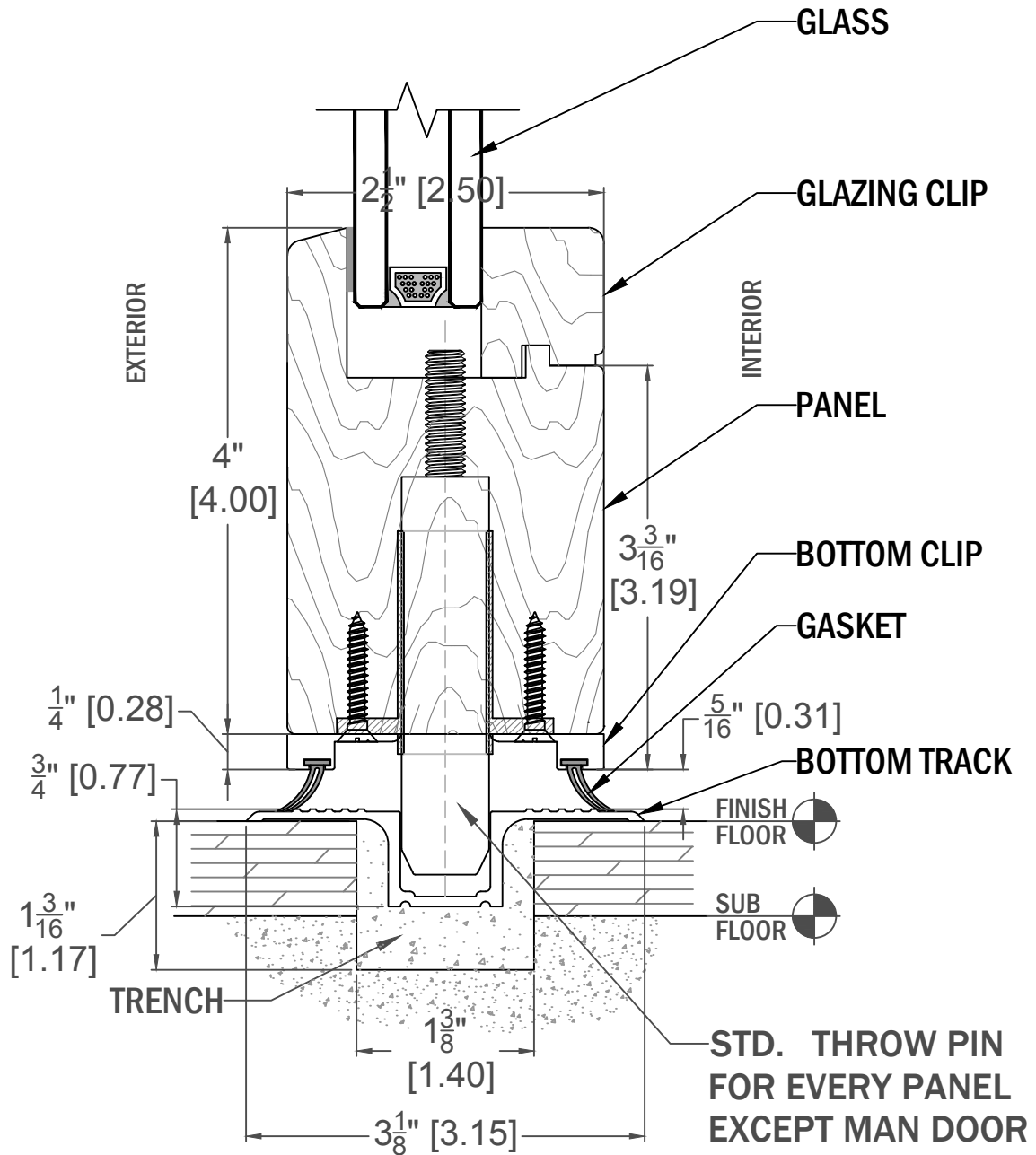
Folding door systems, excluding fitting materials, weigh approx. 6 to 8 lbs/sqft, changing with the height and width of the panels.





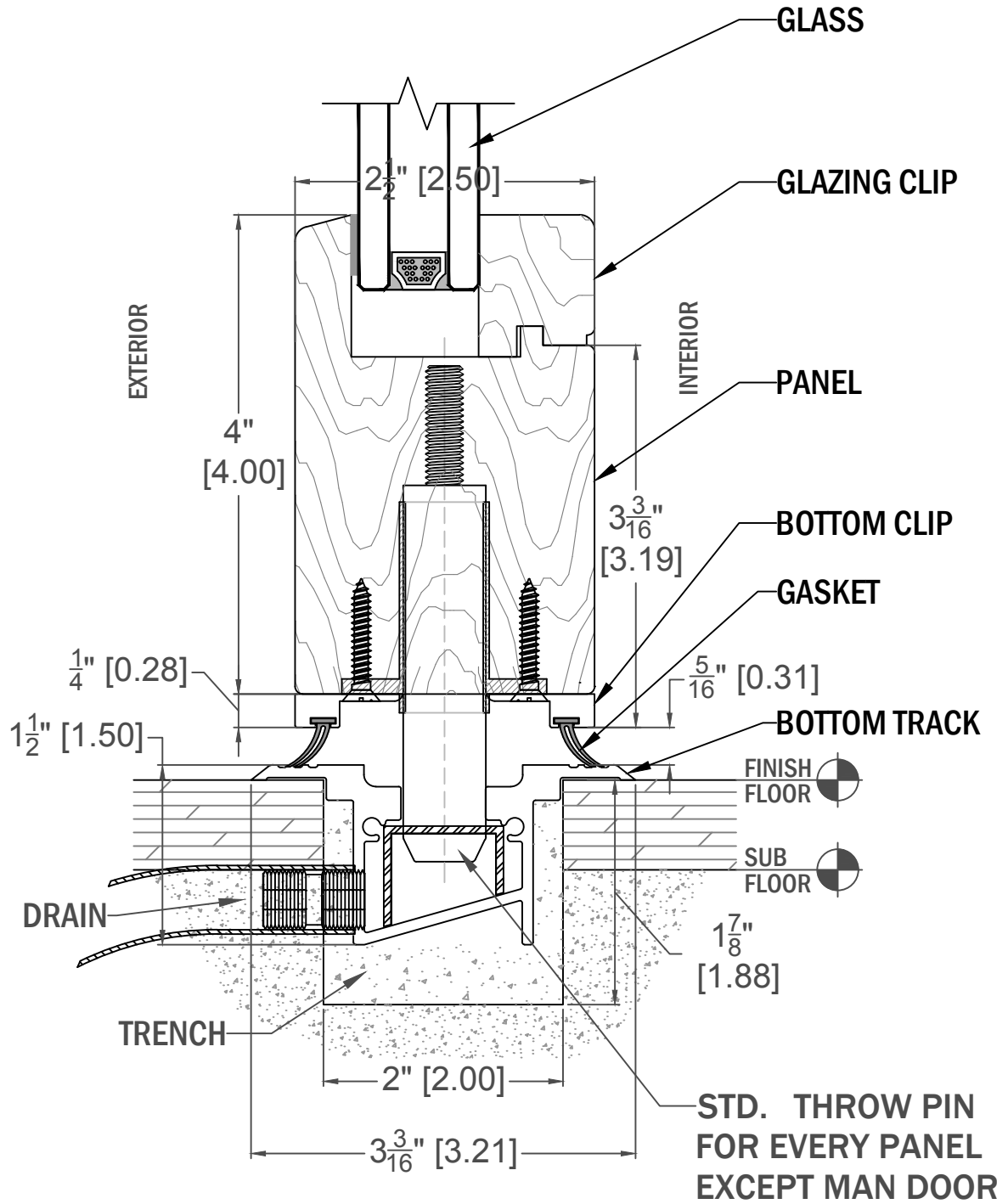
HSW-S66 SOLID WOOD
3/4" RECESSED TRACK

TRACK CONFIGURATION



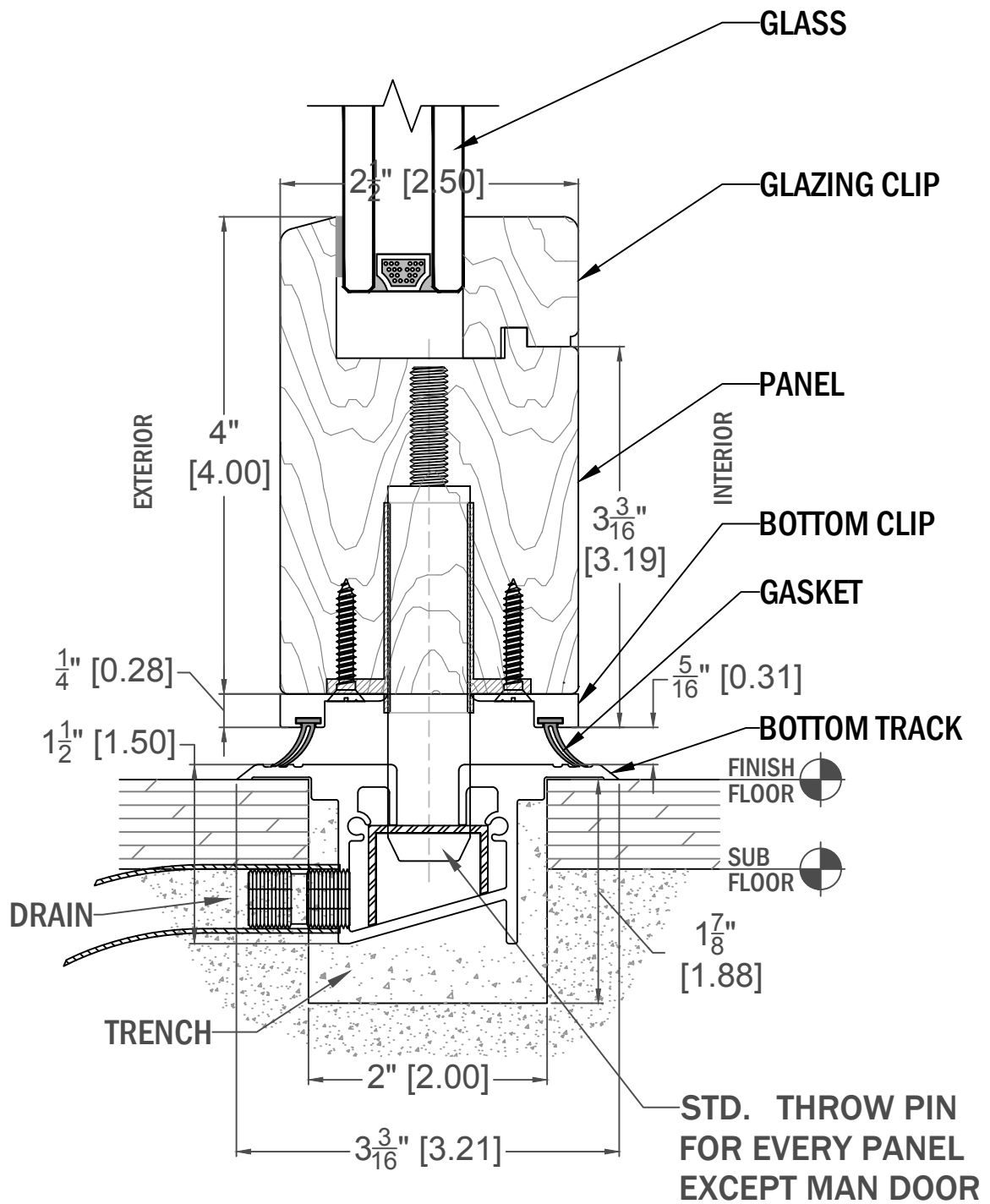
HSW-S66 SOLID WOOD
1 1/2" RECESSED DRAIN TRACK

TRACK CONFIGURATION



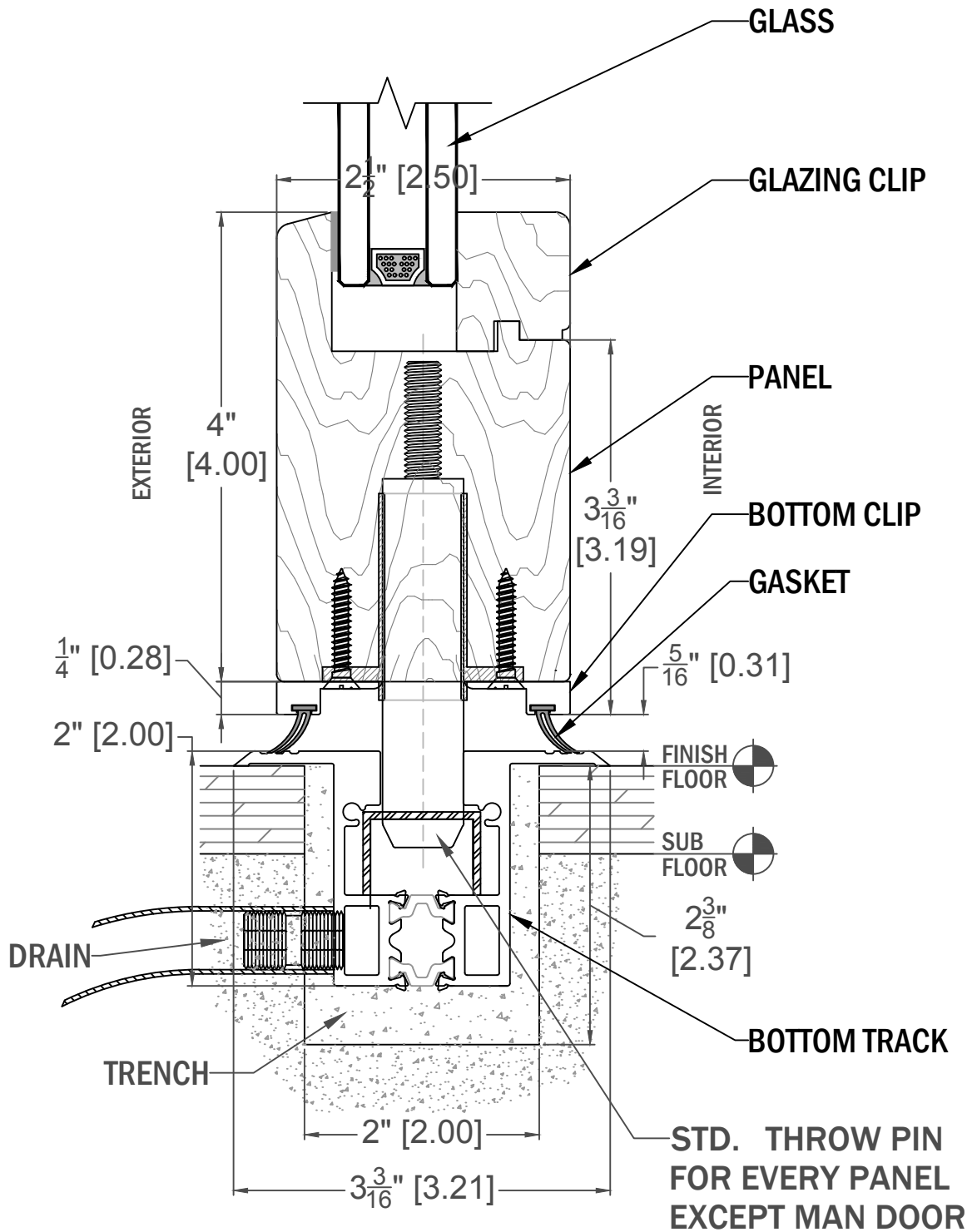
HSW-S66 SOLID WOOD
1½" ADA RECESSED DRAIN TRACK

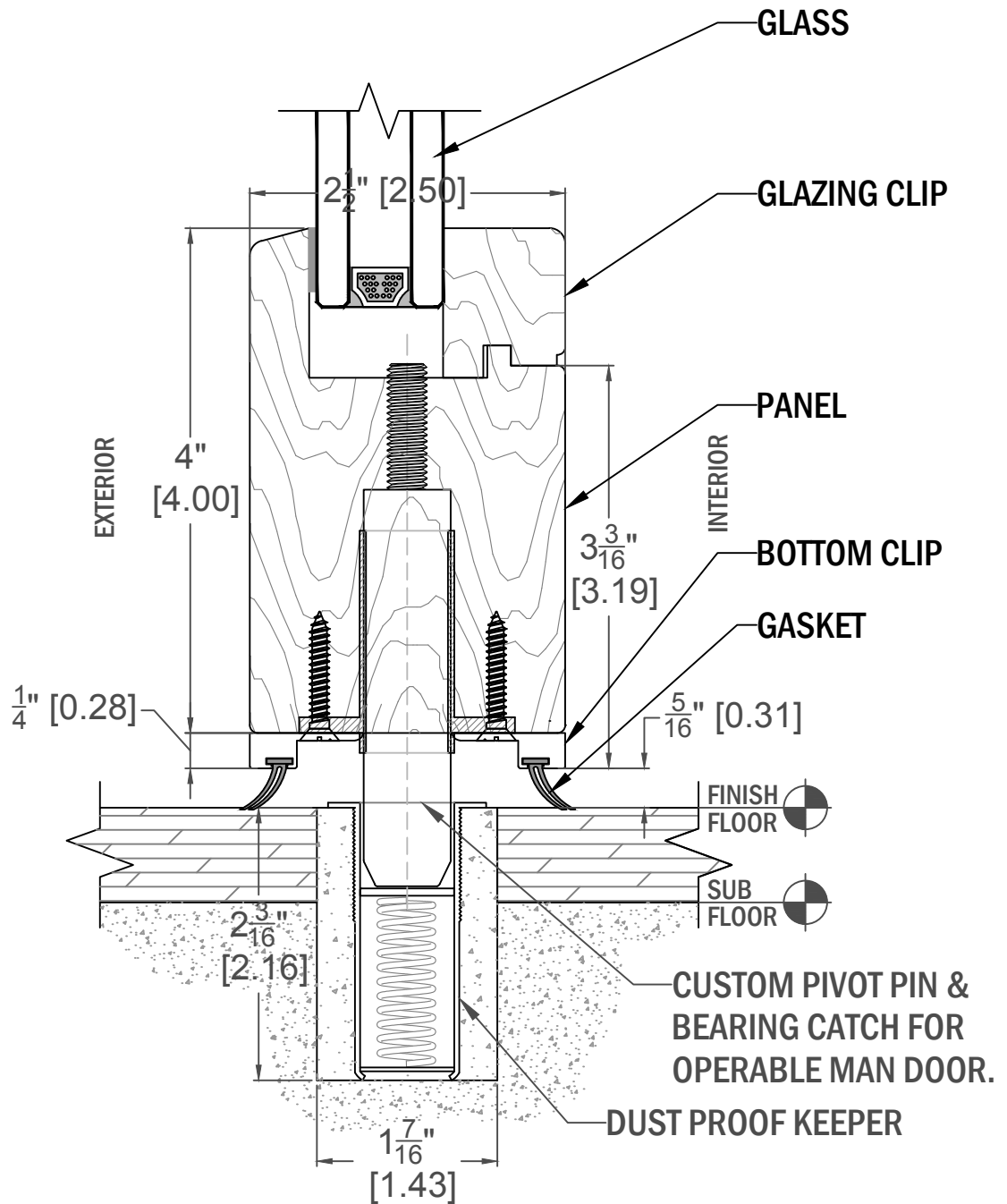
TRACK CONFIGURATION



**HSW-S66 SOLID WOOD
2" TB RECESSED DRAIN TRACK**

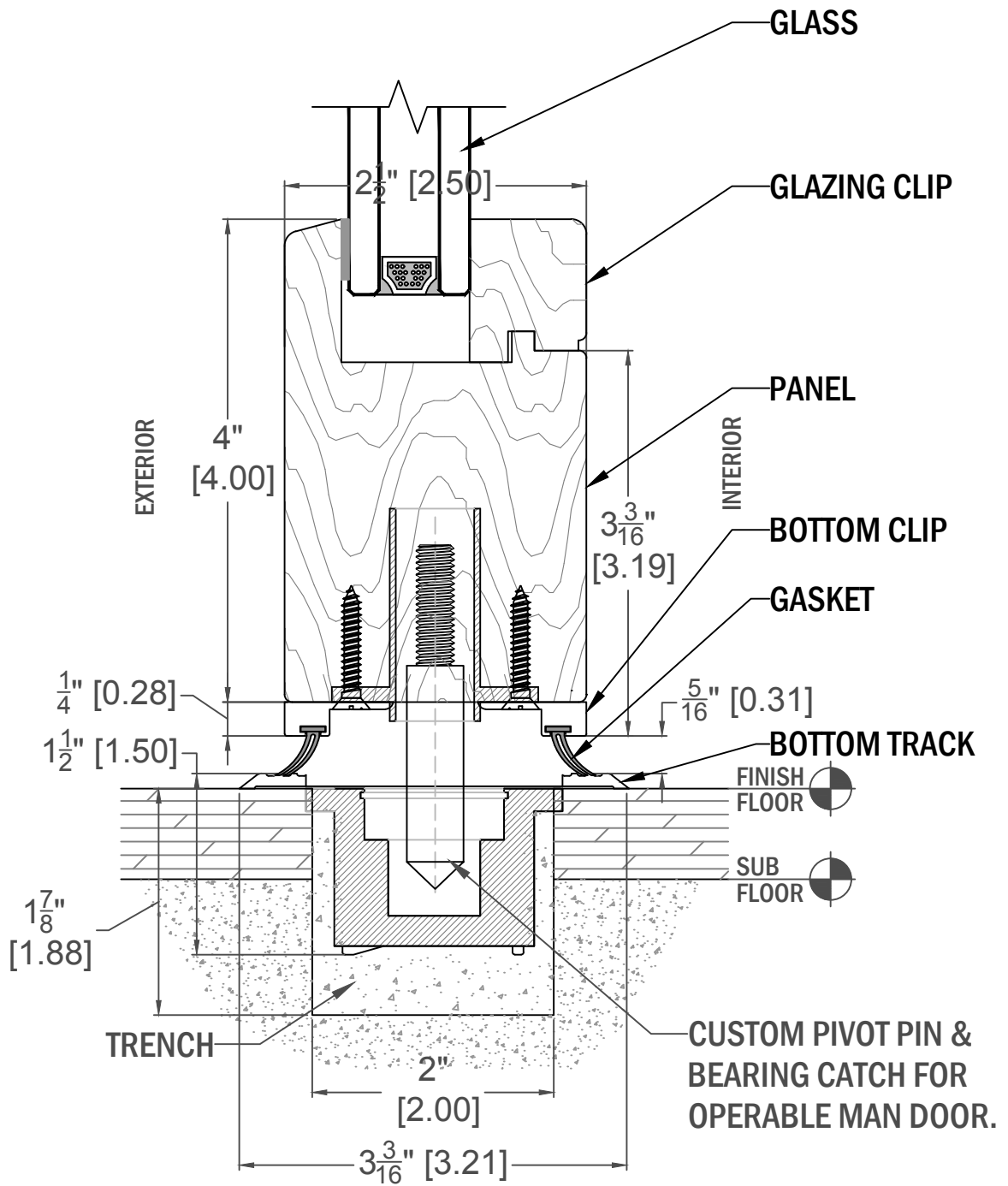
TRACK CONFIGURATION

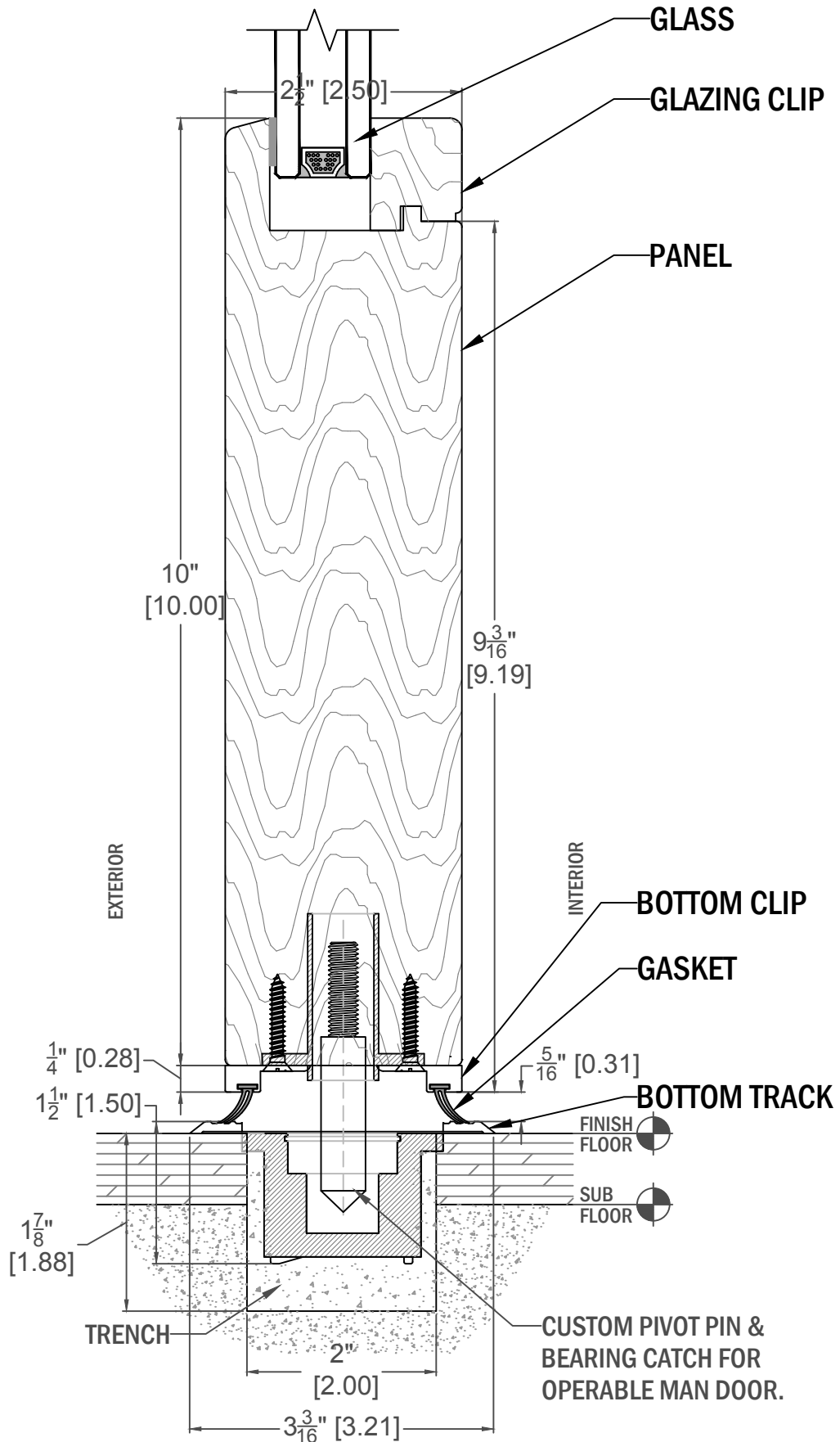




**HSW-S66 SOLID WOOD
PIVOT BLOCK ON RECESSED TRACK**

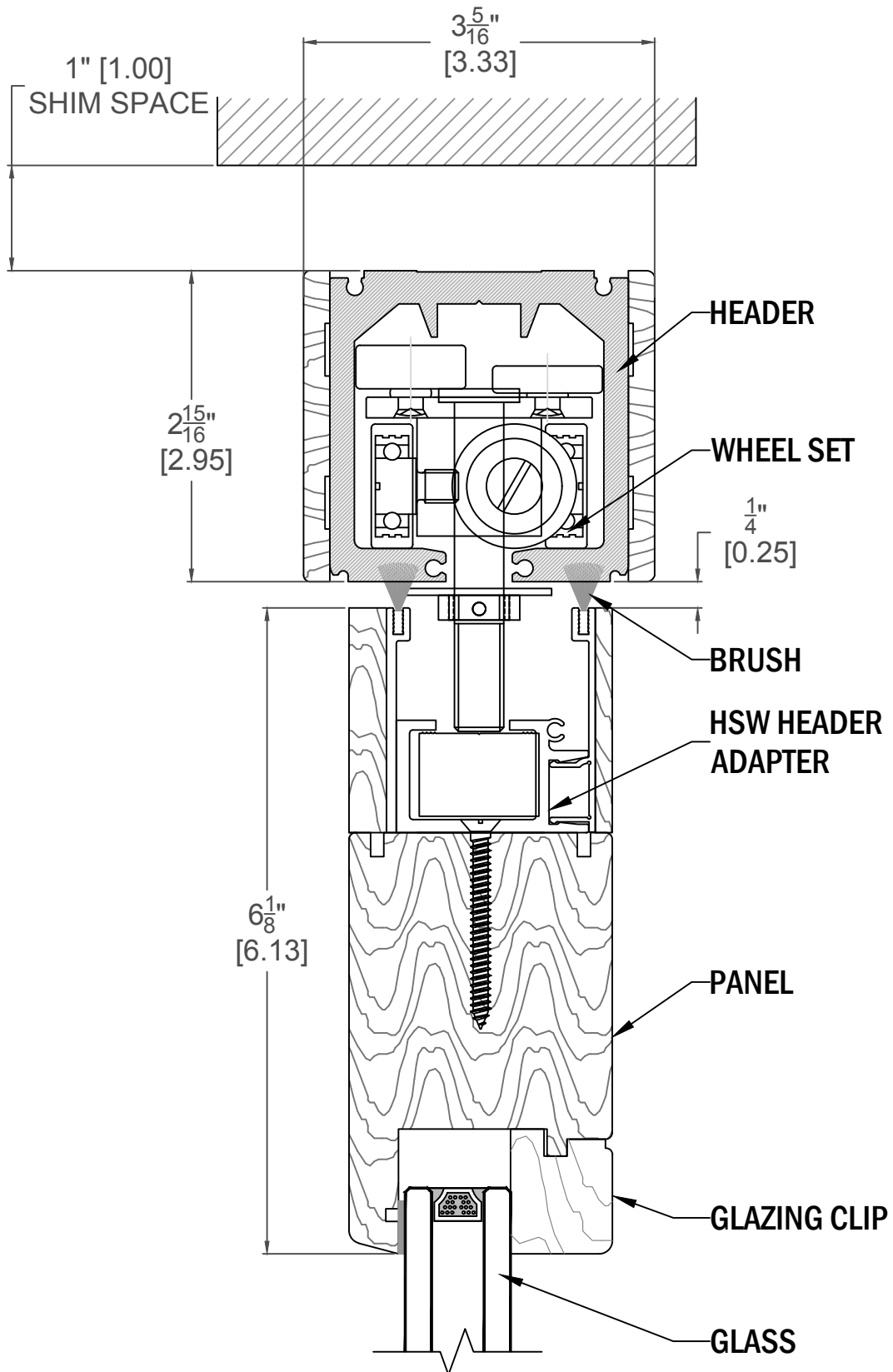
TRACK CONFIGURATION





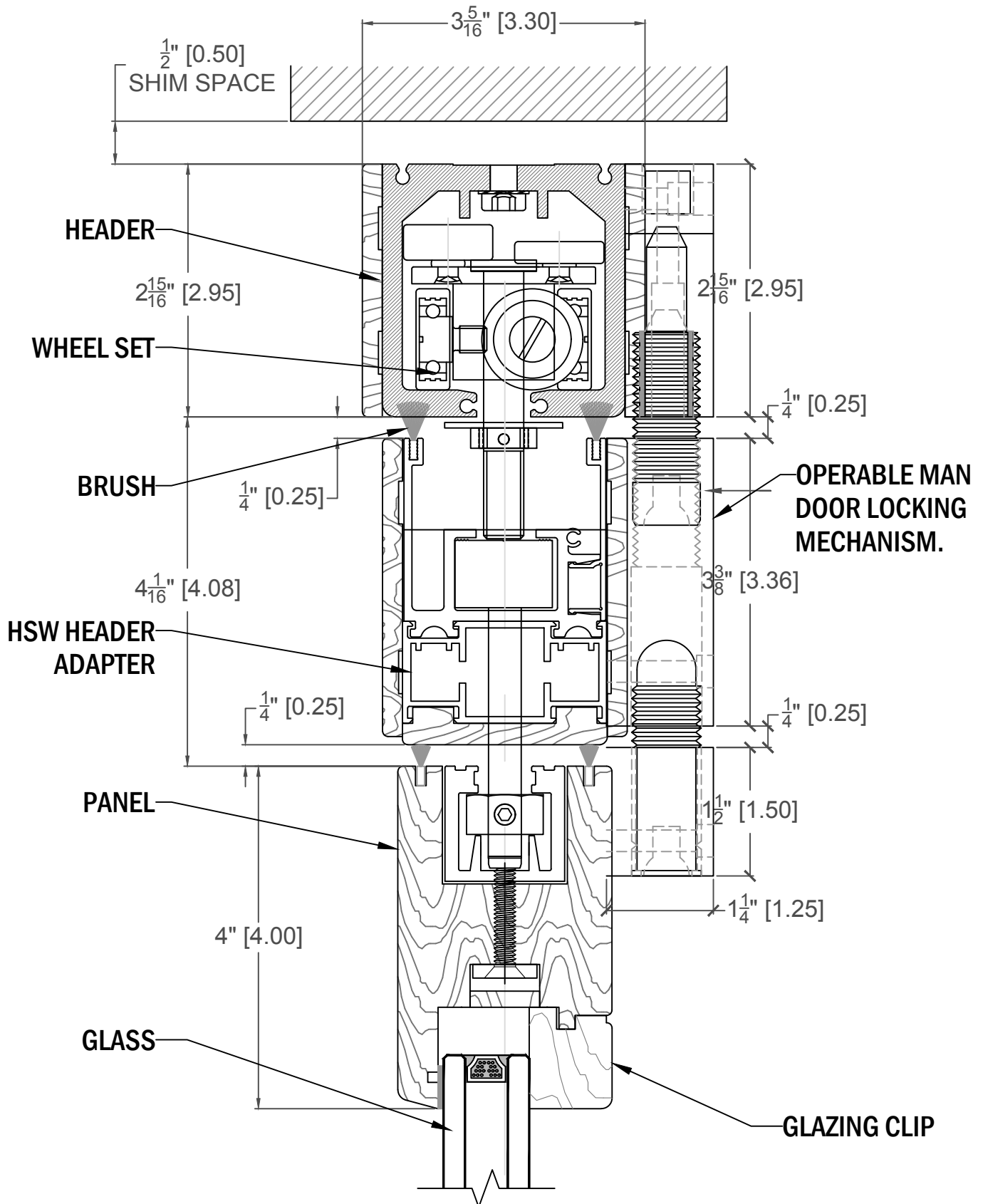
HSW-S66 SOLID WOOD HEADER FOR OPERABLE ONLY PANELS

TRACK CONFIGURATION



HSW-S66 SOLID WOOD HEADER FOR SWING-OPERABLE PANELS

TRACK CONFIGURATION



HSW-S66 SOLID WOOD HEADER FOR SWING ONLY PANELS

TRACK CONFIGURATION

