



The Panda SERIES TS.X0 (x-zero) Sliding Door System is custom made to order .

### ■ Profiles:

Profiles are manufactured from 6063-T5 extruded aluminum engineered for strength allowing for oversized panels. The door systems are available with either powder coat, Kynar or anodized finishes in virtually any color the customer chooses.

### ■ Tracking:

The TS.X0 has 3 options for tracks. All 3 tracks are recessed with drainage. The standard track offers the smallest sightline at the floor at  $\frac{7}{16}$ " . We offer an ADA friendly track as an option. The third optional track offers the least visible track and is also ADA friendly.

### ■ Hardware:

The wheel carriages are comprised of stainless steel wheels in the recessed track to create a minimal bottom panel rail. The operating mechanism includes a multi-point lock with low profile handle.

### ■ Weight:

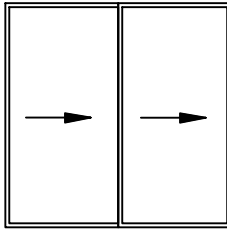
Each panel weighs approximately 8 to 10 lbs per sq ft depending on overall panel size and glass configuration.

### ■ Glazing:

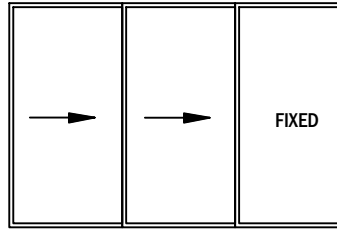
There is no glazing clip instead the glass is structurally glazed to the frame. Due to the glazing configuration Panda can only offer a  $1 \frac{3}{4}$ " glass thickness.



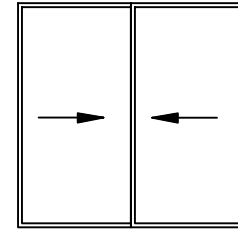
## PANEL CONFIGURATION WITH FIXED PANEL



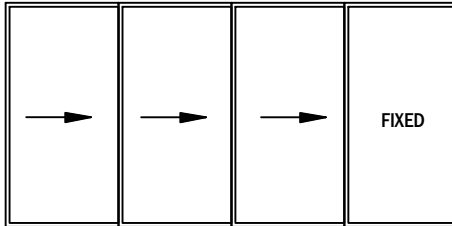
2 PANEL



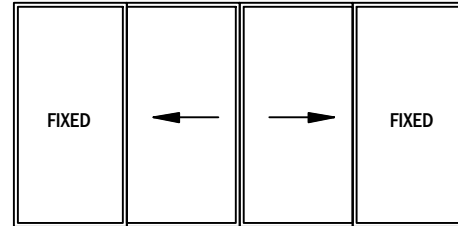
3 PANEL



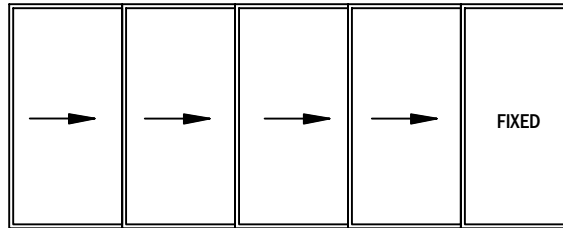
2 PANEL



4 PANEL

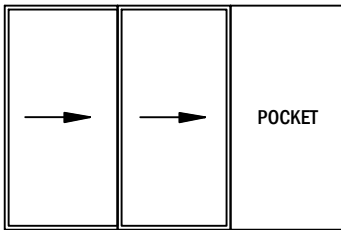


4 PANEL BIPART

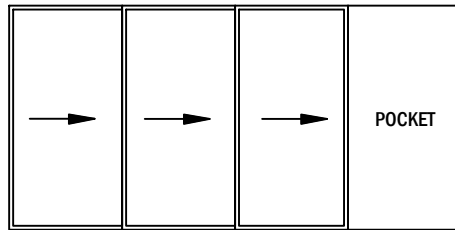


5 PANEL

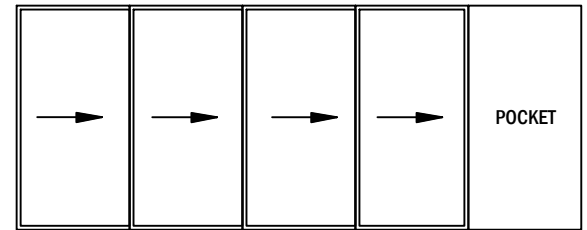
## PANEL CONFIGURATION WITH POCKETS



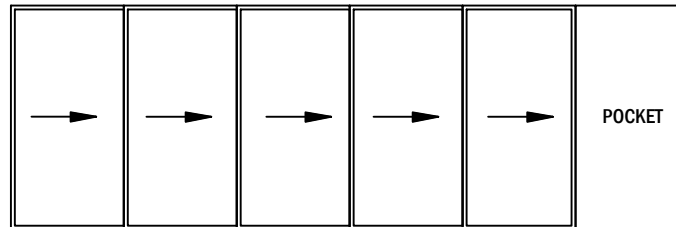
2 PANEL / 1 POCKET



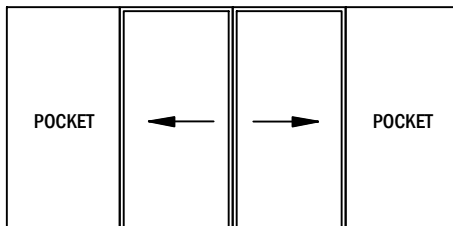
3 PANEL / 1 POCKET



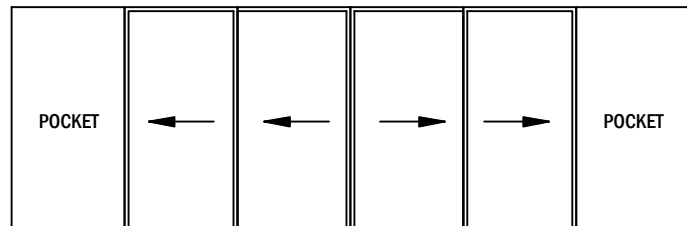
4 PANEL / 1 POCKET



5 PANEL / 1 POCKET



2 PANEL BIPART / 2 POCKET

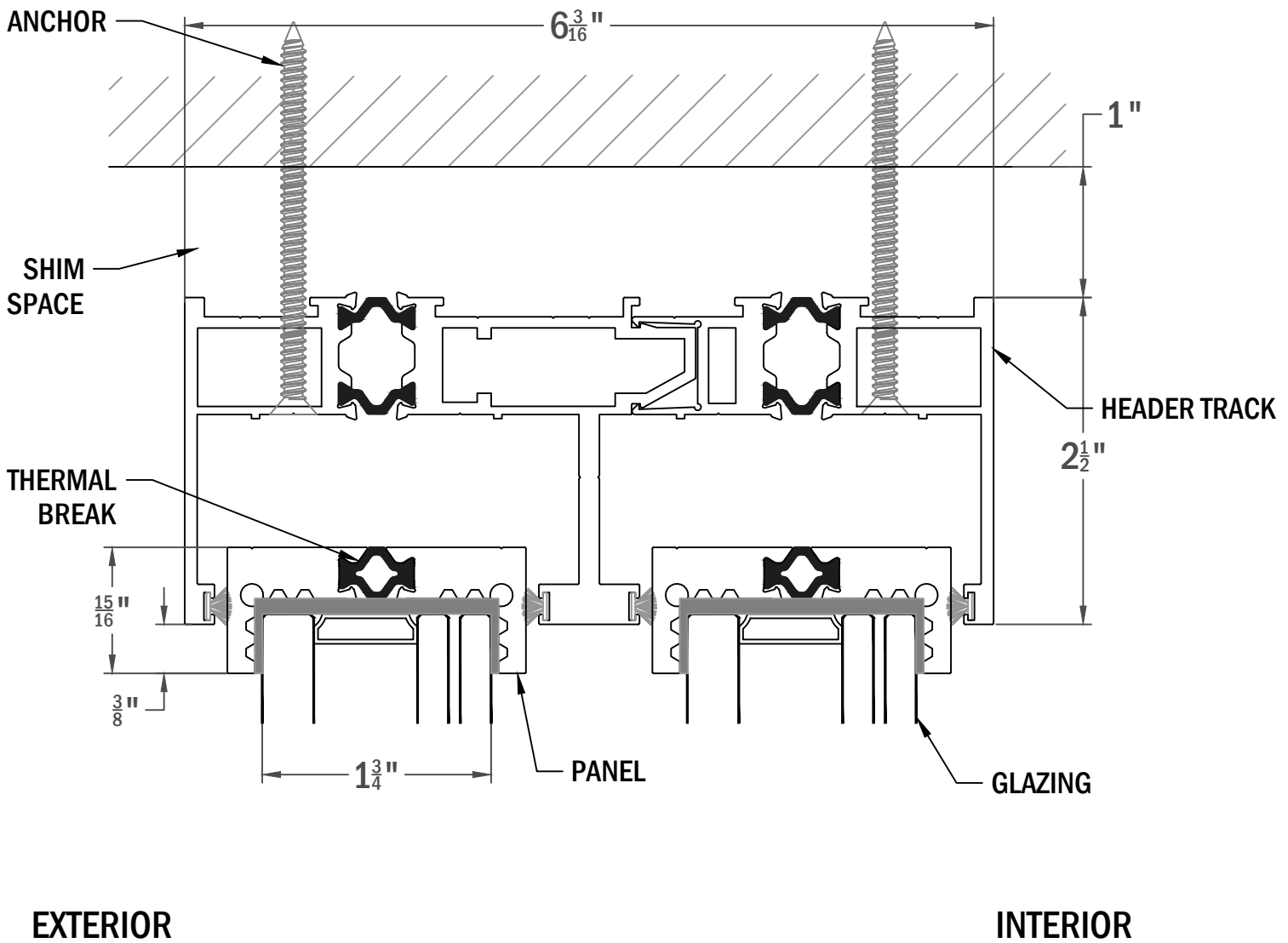


4 PANEL BIPART / 2 POCKET



**HEADER WIDTH:**

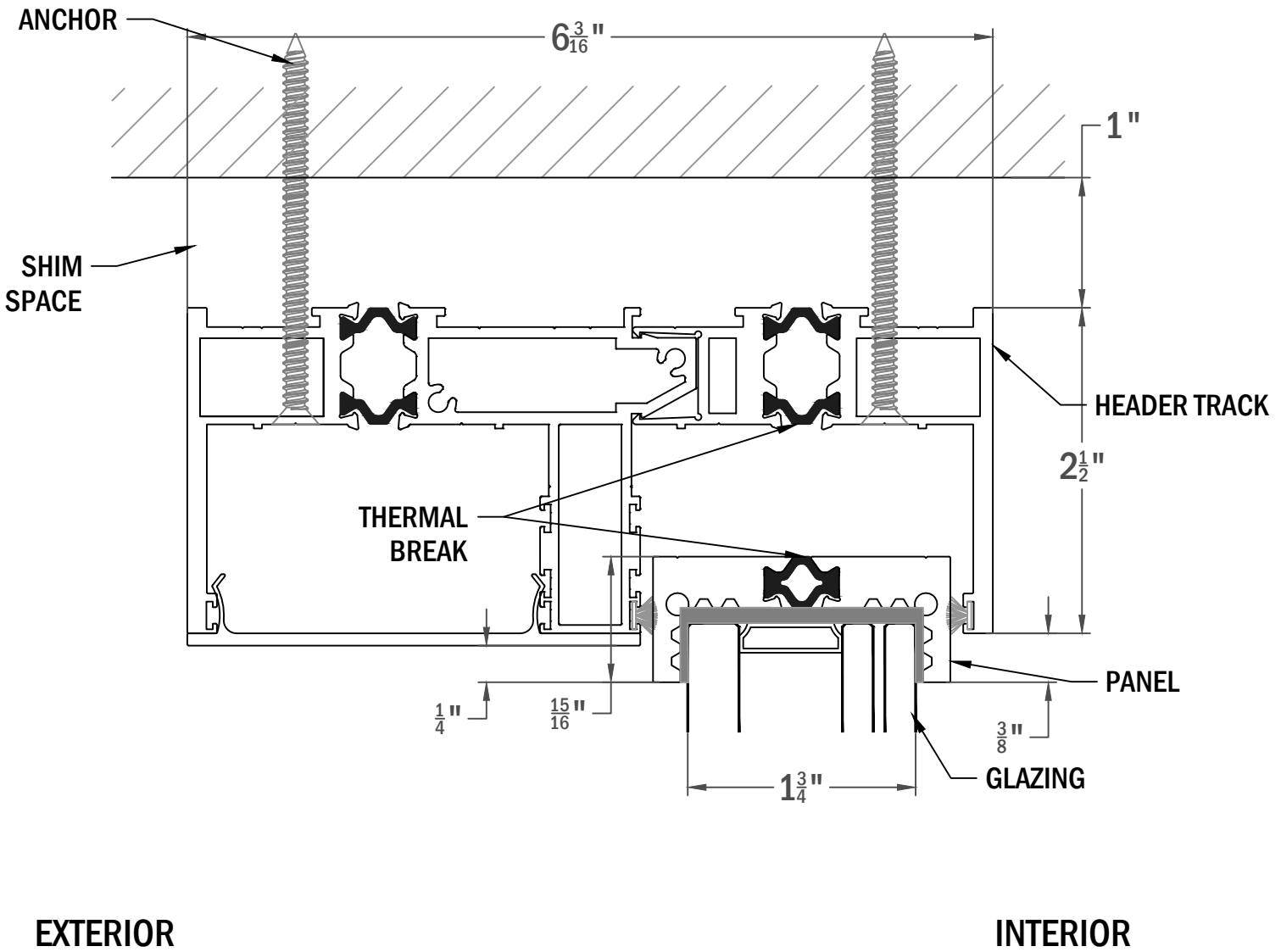
- 1 TRACKS/PANELS WIDTH -  $2 \frac{15}{16}$ "
- 2 TRACKS/PANELS WIDTH -  $6 \frac{3}{16}$ "
- 3 TRACKS/PANELS WIDTH -  $9 \frac{7}{16}$ "
- 4 TRACKS/PANELS WIDTH -  $12 \frac{11}{16}$ "
- 5 TRACKS/PANELS WIDTH -  $15 \frac{15}{16}$ "
- 6 TRACKS/PANELS WIDTH -  $19 \frac{3}{16}$ "





### HEADER WIDTH:

- 1 TRACKS/PANELS WIDTH -  $2 \frac{15}{16}$ "
- 2 TRACKS/PANELS WIDTH -  $6 \frac{3}{16}$ "
- 3 TRACKS/PANELS WIDTH -  $9 \frac{7}{16}$ "
- 4 TRACKS/PANELS WIDTH -  $12 \frac{11}{16}$ "
- 5 TRACKS/PANELS WIDTH -  $15 \frac{15}{16}$ "
- 6 TRACKS/PANELS WIDTH -  $19 \frac{3}{16}$ "



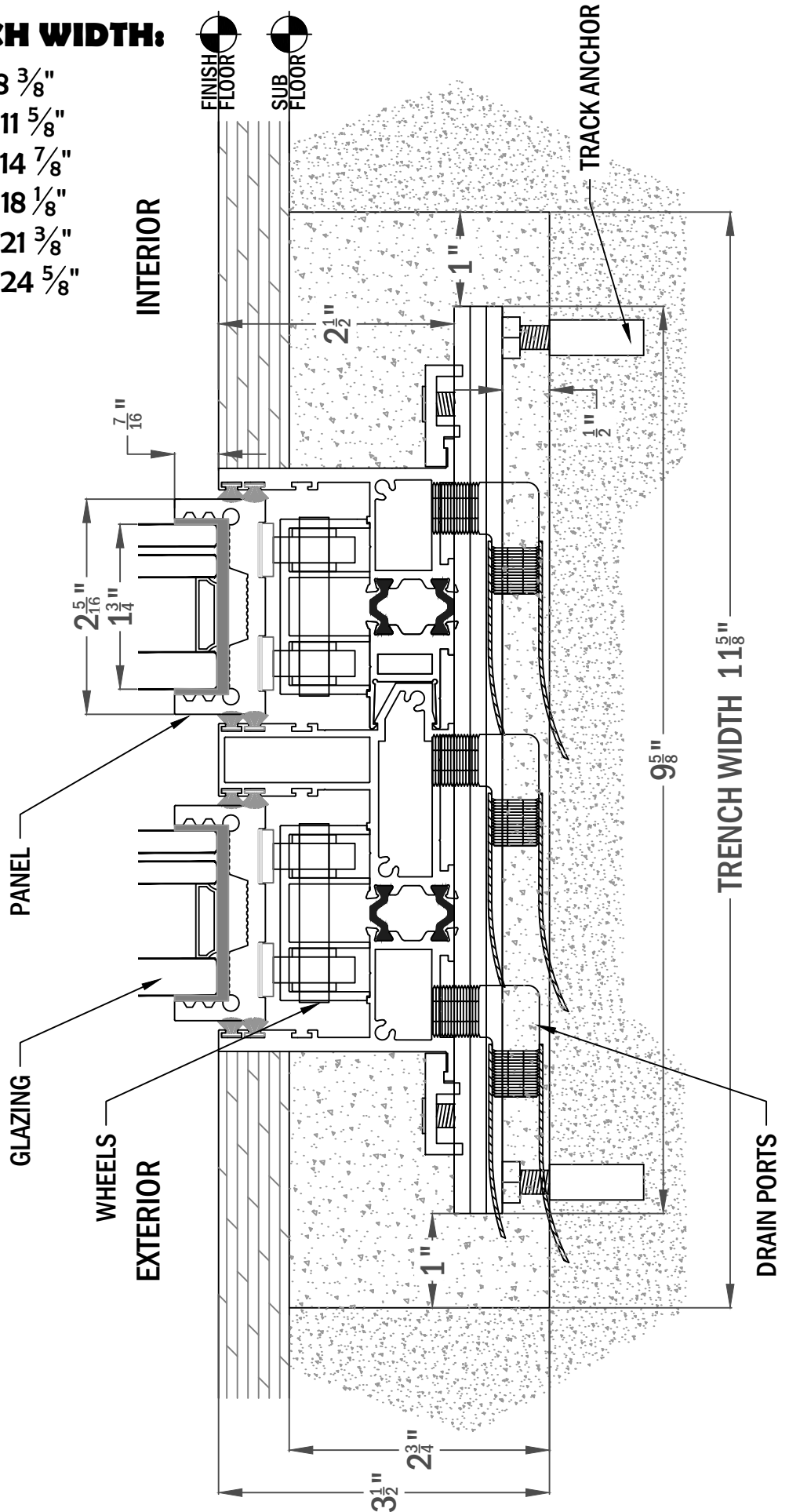
EXTERIOR

INTERIOR



**RECOMMENDED TRENCH WIDTH:**

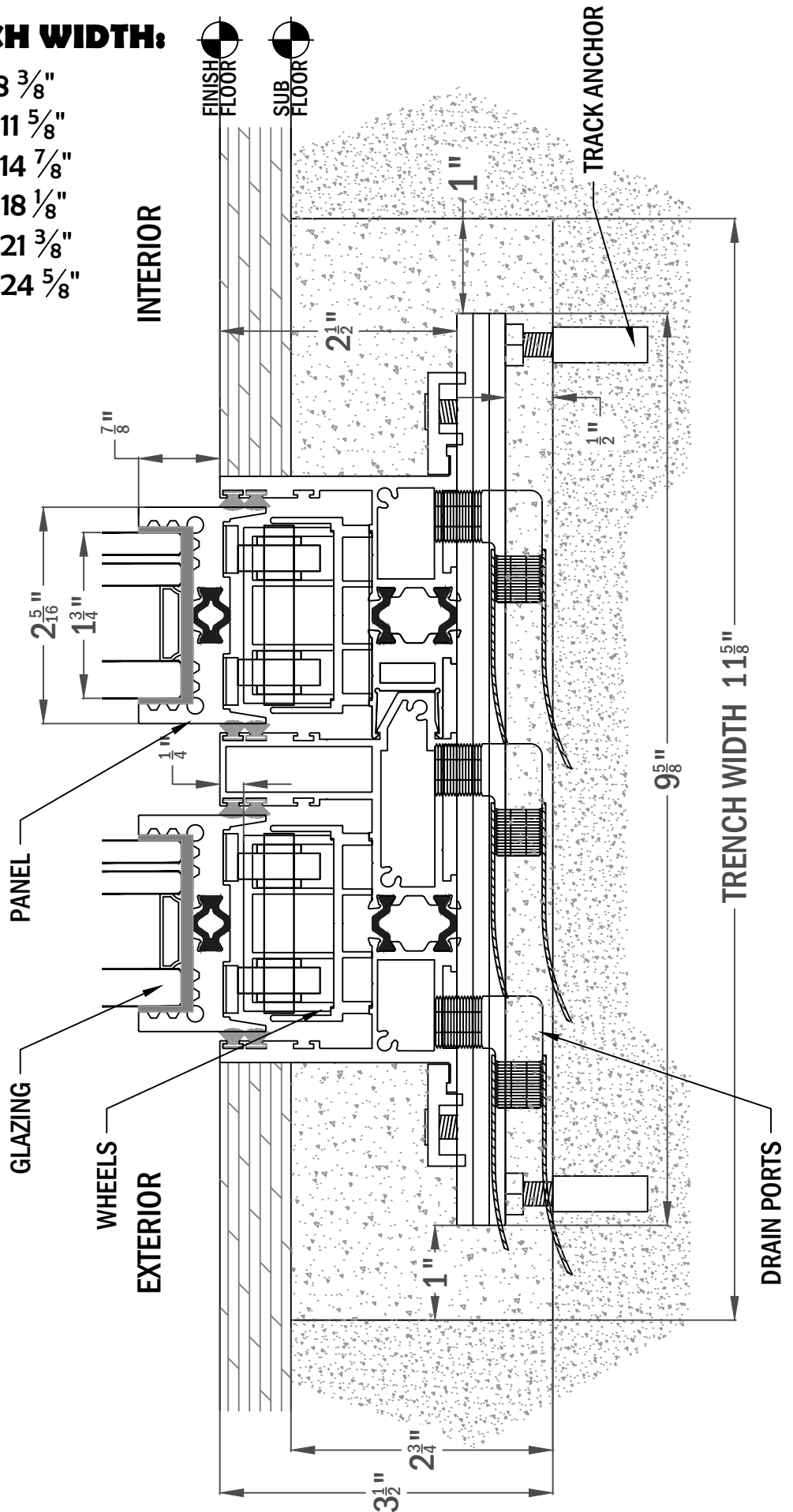
- 1 TRACKS TRENCH WIDTH - 8 3/8"
- 2 TRACKS TRENCH WIDTH - 11 5/8"
- 3 TRACKS TRENCH WIDTH - 14 7/8"
- 4 TRACKS TRENCH WIDTH - 18 1/8"
- 5 TRACKS TRENCH WIDTH - 21 3/8"
- 6 TRACKS TRENCH WIDTH - 24 5/8"





**RECOMMENDED TRENCH WIDTH:**

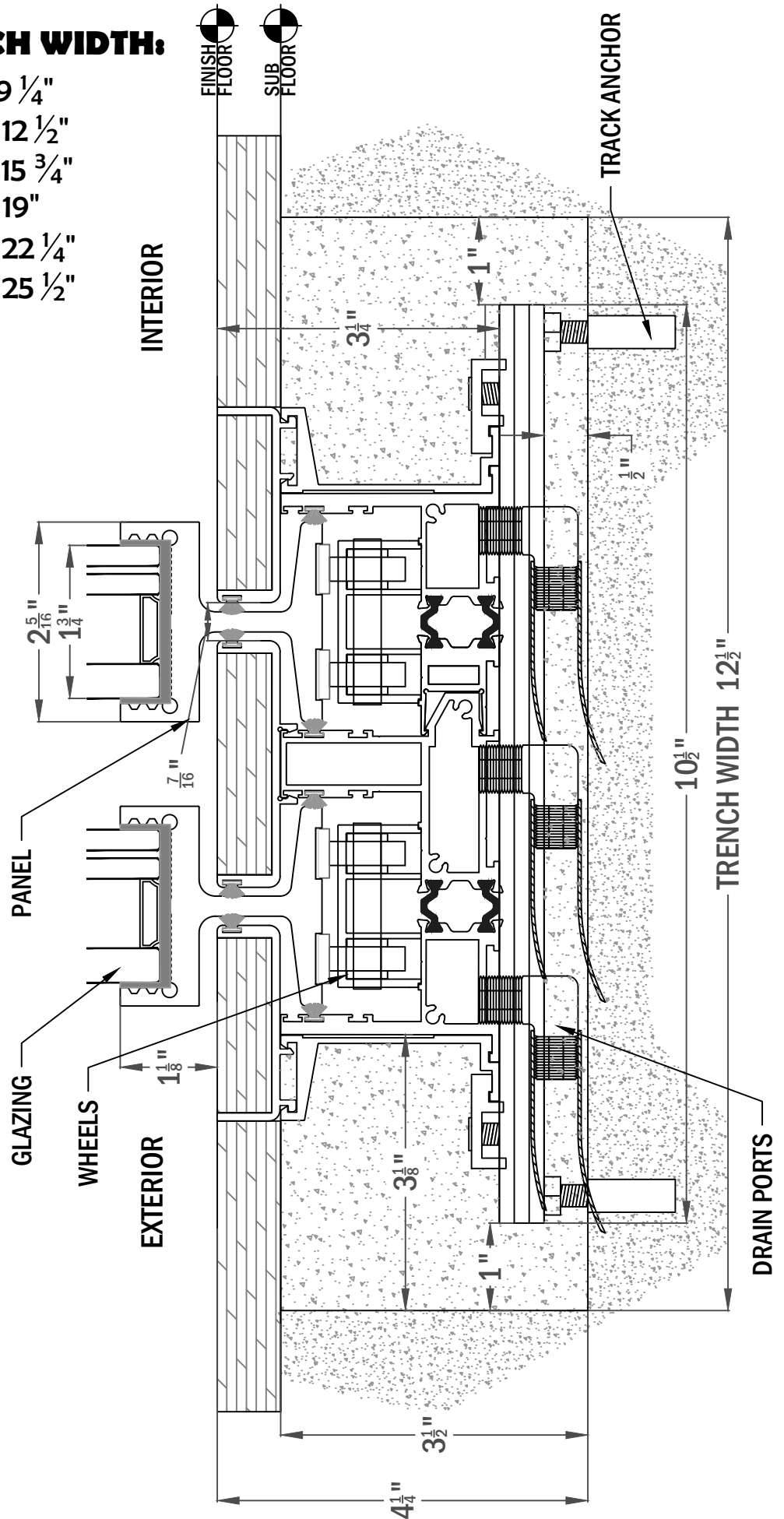
- 1 TRACKS TRENCH WIDTH - 8 3/8"
- 2 TRACKS TRENCH WIDTH - 11 5/8"
- 3 TRACKS TRENCH WIDTH - 14 7/8"
- 4 TRACKS TRENCH WIDTH - 18 1/8"
- 5 TRACKS TRENCH WIDTH - 21 3/8"
- 6 TRACKS TRENCH WIDTH - 24 5/8"

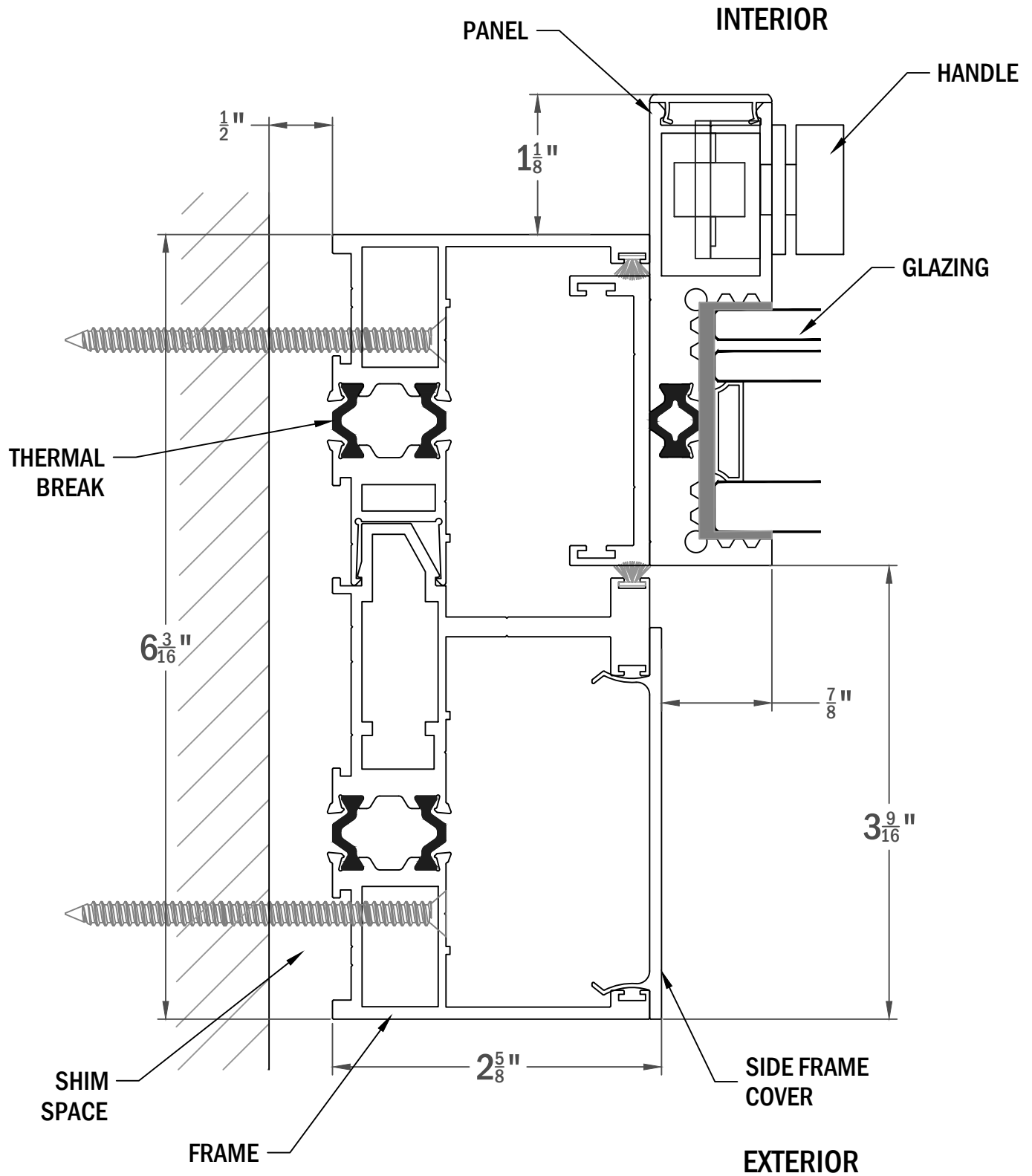




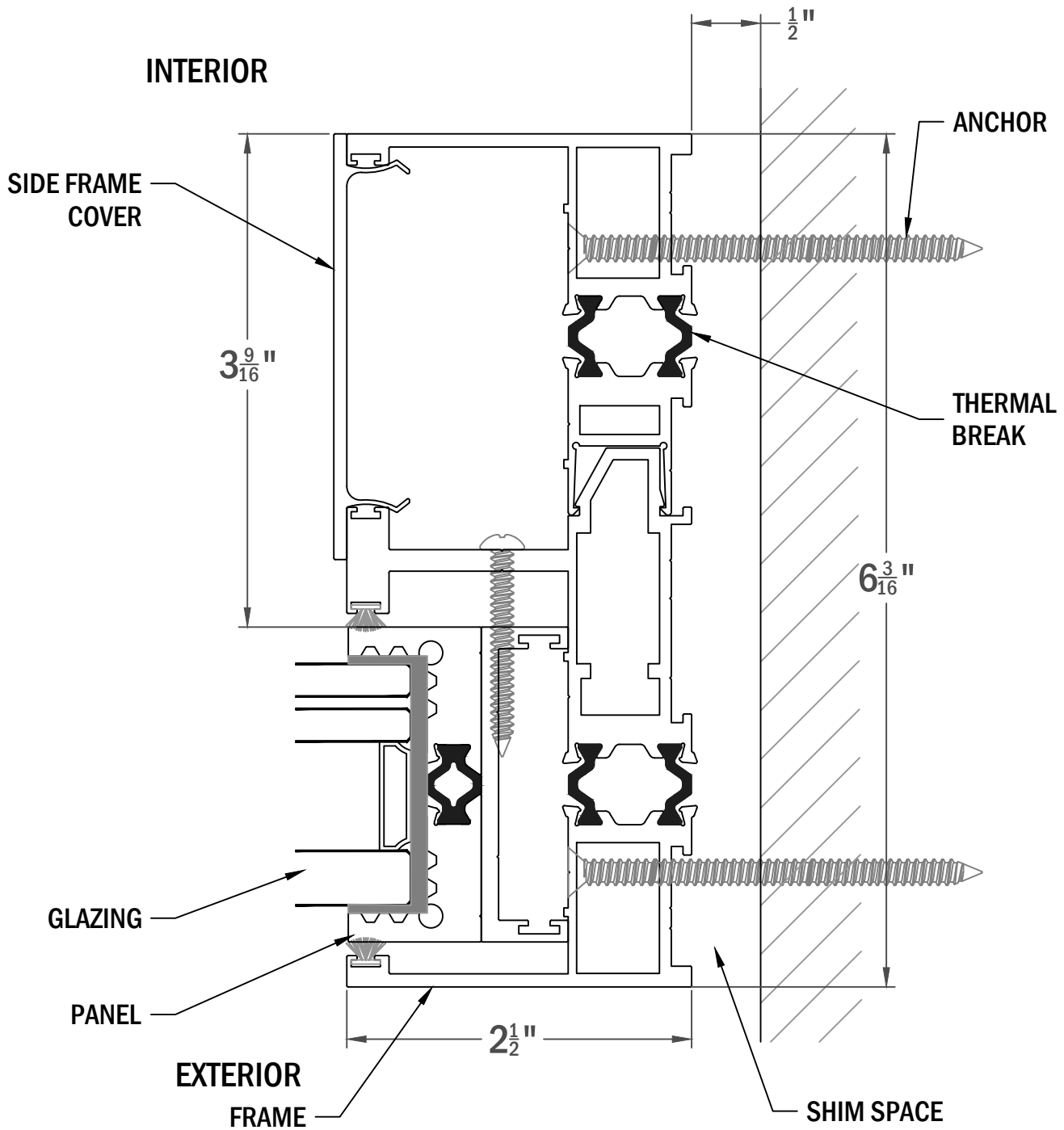
**RECOMMENDED TRENCH WIDTH:**

- 1 TRACKS TRENCH WIDTH - 9 1/4"
- 2 TRACKS TRENCH WIDTH - 12 1/2"
- 3 TRACKS TRENCH WIDTH - 15 3/4"
- 4 TRACKS TRENCH WIDTH - 19"
- 5 TRACKS TRENCH WIDTH - 22 1/4"
- 6 TRACKS TRENCH WIDTH - 25 1/2"



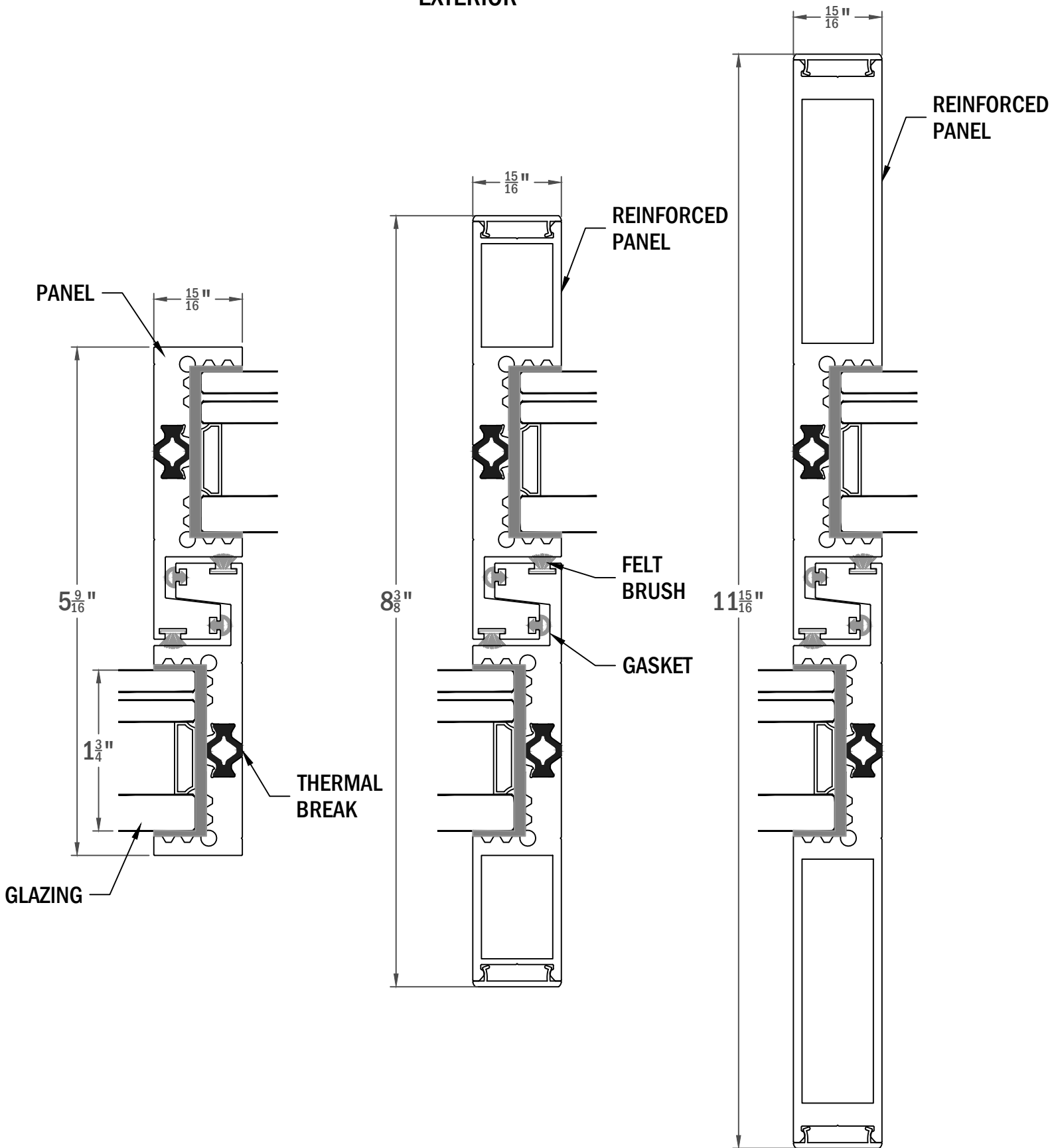








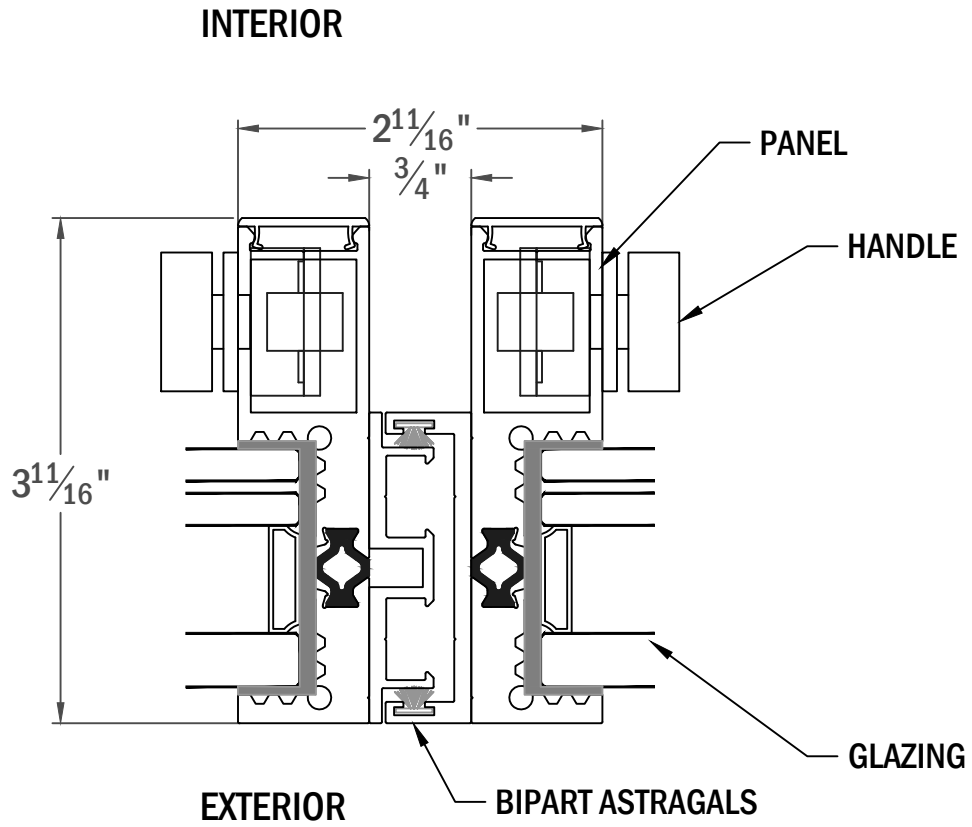
EXTERIOR



INTERIOR



**BIPART DETAIL:**



**90° CORNER:**

